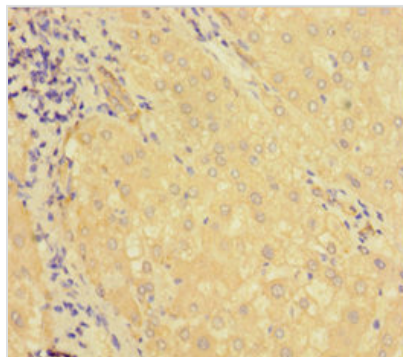




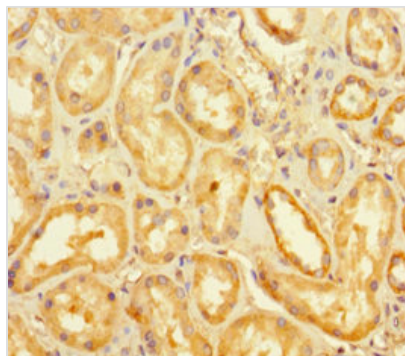
KDM1B Antibody

Product Code	CSB-PA822748LA01HU
Storage	Upon receipt, store at -20°C or -80°C. Avoid repeated freeze.
Uniprot No.	Q8NB78
Immunogen	Recombinant Human Lysine-specific histone demethylase 1B protein (451-544AA)
Raised In	Rabbit
Species Reactivity	Human
Tested Applications	ELISA, IHC; Recommended dilution: IHC:1:20-1:200
Form	Liquid
Conjugate	Non-conjugated
Storage Buffer	Preservative: 0.03% Proclin 300 Constituents: 50% Glycerol, 0.01M PBS, PH 7.4
Purification Method	>95%, Protein G purified
Isotype	IgG
Clonality	Polyclonal
Alias	Lysine-specific histone demethylase 1B (EC 1.-.-.-) (Flavin-containing amine oxidase domain-containing protein 1) (Lysine-specific histone demethylase 2), KDM1B, AOF1 C6orf193 LSD2
Immunogen Species	Homo sapiens (Human)
Research Area	Epigenetics and Nuclear Signaling
Target Names	KDM1B

Image



Immunohistochemistry of paraffin-embedded human liver tissue using CSB-PA822748LA01HU at dilution of 1:100



Immunohistochemistry of paraffin-embedded human kidney tissue using CSB-PA822748LA01HU at dilution of 1:100