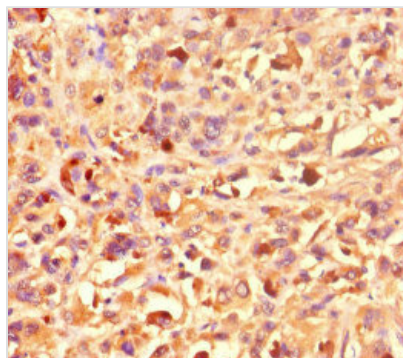




KAT2B Antibody

| | |
|----------------------------|---|
| Product Code | CSB-PA835706LA01HU |
| Storage | Upon receipt, store at -20°C or -80°C. Avoid repeated freeze. |
| Uniprot No. | Q92831 |
| Immunogen | Recombinant Human Histone acetyltransferase KAT2B protein (767-832AA) |
| Raised In | Rabbit |
| Species Reactivity | Human |
| Tested Applications | ELISA, IHC; Recommended dilution: IHC:1:20-1:200 |
| Form | Liquid |
| Conjugate | Non-conjugated |
| Storage Buffer | Preservative: 0.03% Proclin 300 Constituents: 50% Glycerol, 0.01M PBS, PH 7.4 |
| Purification Method | >95%, Protein G purified |
| Isotype | IgG |
| Clonality | Polyclonal |
| Alias | Histone acetyltransferase KAT2B (EC 2.3.1.48) (Histone acetyltransferase PCAF) (Histone acetylase PCAF) (Lysine acetyltransferase 2B) (P300/CBP-associated factor) (P/CAF), KAT2B, PCAF |
| Immunogen Species | Homo sapiens (Human) |
| Research Area | Cell Biology |
| Target Names | KAT2B |

Image



Immunohistochemistry of paraffin-embedded human melanoma using CSB-PA835706LA01HU at dilution of 1:100

Usage

For Research Use Only. Not for use in diagnostic or therapeutic procedures.