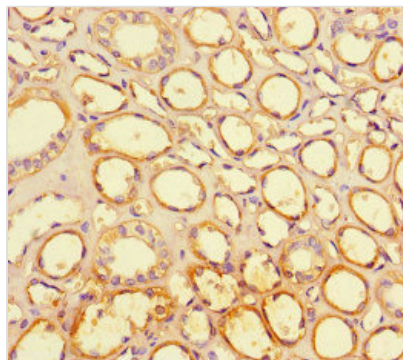




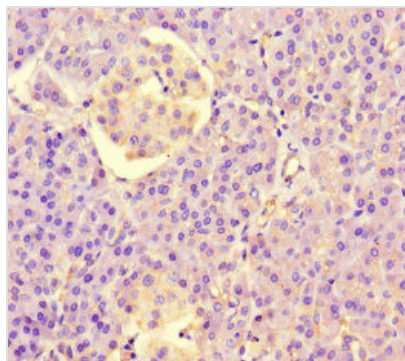
LRR1 Antibody

Product Code	CSB-PA836247LA01HU
Storage	Upon receipt, store at -20°C or -80°C. Avoid repeated freeze.
Uniprot No.	Q96L50
Immunogen	Recombinant Human Leucine-rich repeat protein 1 protein (18-159AA)
Raised In	Rabbit
Species Reactivity	Human
Tested Applications	ELISA, IHC, IF; Recommended dilution: IHC:1:20-1:200, IF:1:50-1:200
Form	Liquid
Conjugate	Non-conjugated
Storage Buffer	Preservative: 0.03% Proclin 300 Constituents: 50% Glycerol, 0.01M PBS, PH 7.4
Purification Method	>95%, Protein G purified
Isotype	IgG
Clonality	Polyclonal
Alias	Leucine-rich repeat protein 1 (4-1BB-mediated-signaling molecule) (4-1BBIrr) (LRR-repeat protein 1) (LRR-1) (Peptidylprolyl isomerase-like 5), LRR1, PPIL5
Immunogen Species	Homo sapiens (Human)
Research Area	Signal Transduction
Target Names	LRR1

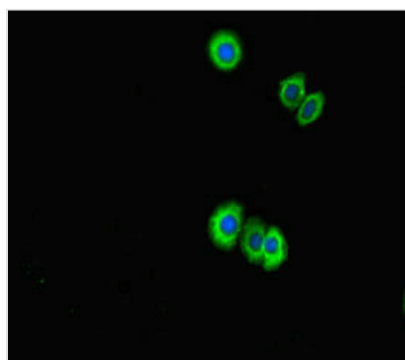
Image



Immunohistochemistry of paraffin-embedded human kidney tissue using CSB-PA836247LA01HU at dilution of 1:100



Immunohistochemistry of paraffin-embedded human pancreatic tissue using CSB-PA836247LA01HU at dilution of 1:100



Immunofluorescent analysis of HepG2 cells using CSB-PA836247LA01HU at dilution of 1:100 and Alexa Fluor 488-conjugated AffiniPure Goat Anti-Rabbit IgG(H+L)

Usage

For Research Use Only. Not for use in diagnostic or therapeutic procedures.