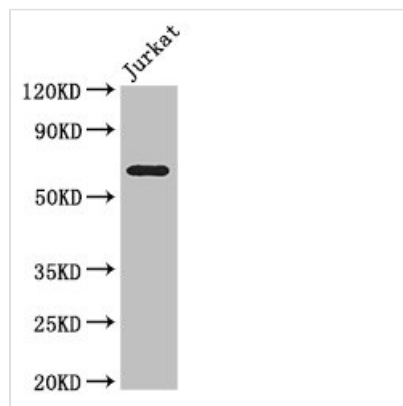




SLC38A9 Antibody

Product Code	CSB-PA836713LA01HU
Storage	Upon receipt, store at -20°C or -80°C. Avoid repeated freeze.
Uniprot No.	Q8NBW4
Immunogen	Recombinant Human Sodium-coupled neutral amino acid transporter 9 protein (1-119AA)
Raised In	Rabbit
Species Reactivity	Human
Tested Applications	ELISA, WB, IHC, IF; Recommended dilution: WB:1:500-1:5000, IHC:1:20-1:200, IF:1:50-1:200
Form	Liquid
Conjugate	Non-conjugated
Storage Buffer	Preservative: 0.03% Proclin 300 Constituents: 50% Glycerol, 0.01M PBS, PH 7.4
Purification Method	>95%, Protein G purified
Isotype	IgG
Clonality	Polyclonal
Alias	Sodium-coupled neutral amino acid transporter 9 (Solute carrier family 38 member 9) (Up-regulated in lung cancer 11), SLC38A9, URLC11
Immunogen Species	Homo sapiens (Human)
Research Area	Signal Transduction
Target Names	SLC38A9

Image



Western Blot

Positive WB detected in: Jurkat whole cell lysate

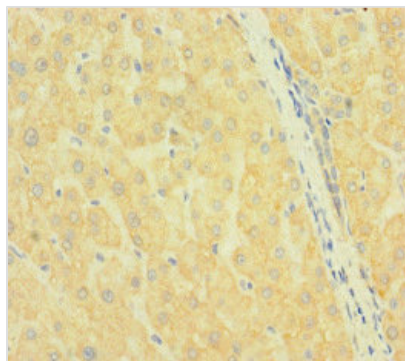
All lanes: SLC38A9 antibody at 3.5µg/ml

Secondary

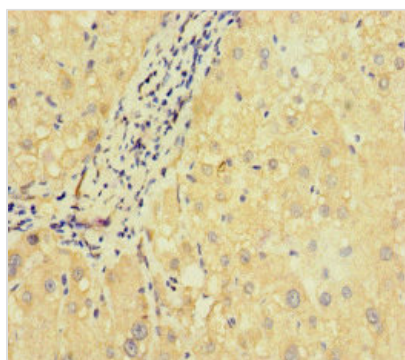
Goat polyclonal to rabbit IgG at 1/50000 dilution

Predicted band size: 64, 53, 57 kDa

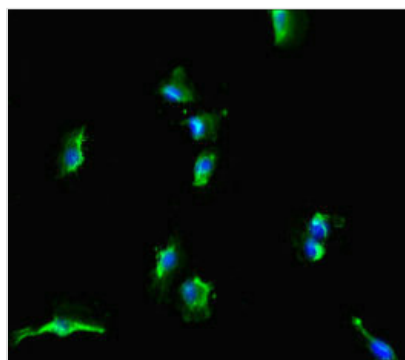
Observed band size: 64 kDa



Immunohistochemistry of paraffin-embedded human liver tissue using CSB-PA836713LA01HU at dilution of 1:100



Immunohistochemistry of paraffin-embedded human liver cancer using CSB-PA836713LA01HU at dilution of 1:100



Immunofluorescent analysis of U251 cells using CSB-PA836713LA01HU at dilution of 1:100 and Alexa Fluor 488-conjugated AffiniPure Goat Anti-Rabbit IgG(H+L)

Usage

For Research Use Only. Not for use in diagnostic or therapeutic procedures.