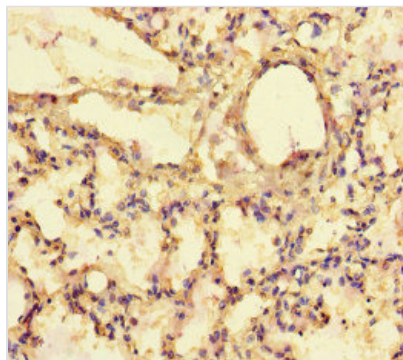




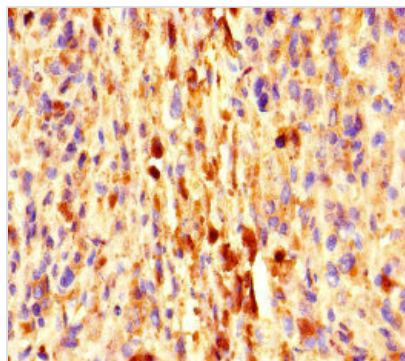
EXPH5 Antibody

| | |
|----------------------------|--|
| Product Code | CSB-PA843342LA01HU |
| Storage | Upon receipt, store at -20°C or -80°C. Avoid repeated freeze. |
| Uniprot No. | Q8NEV8 |
| Immunogen | Recombinant Human Exophilin-5 protein (1235-1490AA) |
| Raised In | Rabbit |
| Species Reactivity | Human |
| Tested Applications | ELISA, IHC; Recommended dilution: IHC:1:20-1:200 |
| Form | Liquid |
| Conjugate | Non-conjugated |
| Storage Buffer | Preservative: 0.03% Proclin 300 Constituents: 50% Glycerol, 0.01M PBS, PH 7.4 |
| Purification Method | >95%, Protein G purified |
| Isotype | IgG |
| Clonality | Polyclonal |
| Alias | Exophilin-5 (Synaptotagmin-like protein homolog lacking C2 domains b) (Slac2-b) (Slp homolog lacking C2 domains b), EXPH5, KIAA0624 SLAC2B |
| Immunogen Species | Homo sapiens (Human) |
| Research Area | Signal Transduction |
| Target Names | EXPH5 |

Image



Immunohistochemistry of paraffin-embedded human lung tissue using CSB-PA843342LA01HU at dilution of 1:100



Immunohistochemistry of paraffin-embedded human melanoma using CSB-PA843342LA01HU at dilution of 1:100

Usage

For Research Use Only. Not for use in diagnostic or therapeutic procedures.