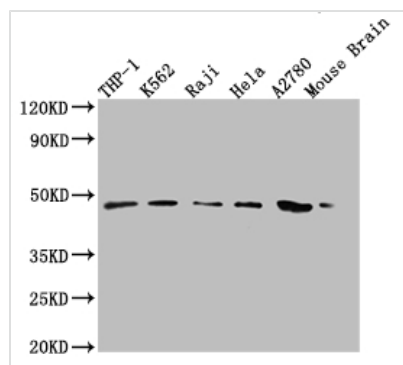




# MR1 Antibody

<b>Product Code</b>	CSB-PA853268LA01HU
<b>Storage</b>	Upon receipt, store at -20°C or -80°C. Avoid repeated freeze.
<b>Uniprot No.</b>	Q95460
<b>Immunogen</b>	Recombinant Human Major histocompatibility complex class I-related gene protein (150-253AA)
<b>Raised In</b>	Rabbit
<b>Species Reactivity</b>	Human, Mouse
<b>Tested Applications</b>	ELISA, WB, IHC, IF; Recommended dilution: WB:1:1000-1:5000, IHC:1:20-1:200, IF:1:50-1:200
<b>Form</b>	Liquid
<b>Conjugate</b>	Non-conjugated
<b>Storage Buffer</b>	Preservative: 0.03% Proclin 300 Constituents: 50% Glycerol, 0.01M PBS, PH 7.4
<b>Purification Method</b>	>95%, Protein G purified
<b>Isotype</b>	IgG
<b>Clonality</b>	Polyclonal
<b>Product Type</b>	Polyclonal Antibody
<b>Immunogen Species</b>	Homo sapiens (Human)
<b>Research Area</b>	Immunology
<b>Target Names</b>	MR1

## Image



### Western Blot

Positive WB detected in: THP-1 whole cell lysate, K-562 whole cell lysate, Raji whole cell lysate, HeLa whole cell lysate, A2780 whole cell lysate, Mouse Brain tissue

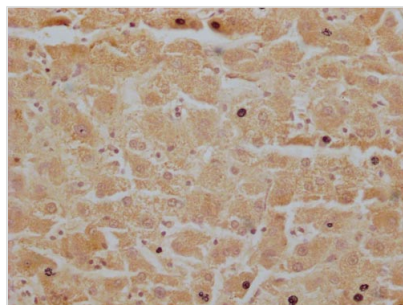
All lanes: MR1 antibody at 1:2000

### Secondary

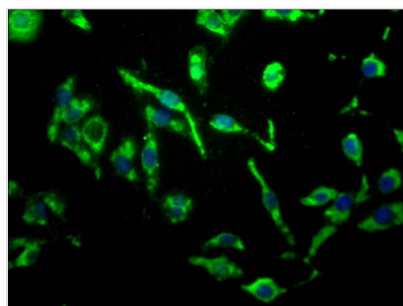
Goat polyclonal to rabbit IgG at 1/50000 dilution

Predicted band size: 40, 35, 29, 26 kDa

Observed band size: 48 kDa



IHC image of CSB-PA853268LA01HU diluted at 1:200 and staining in paraffin-embedded human liver tissue performed on a Leica Bond<sup>TM</sup> system. After dewaxing and hydration, antigen retrieval was mediated by high pressure in a citrate buffer (pH 6.0). Section was blocked with 10% normal goat serum 30min at RT. Then primary antibody (1% BSA) was incubated at 4°C overnight. The primary is detected by a Goat anti-rabbit polymer IgG labeled by HRP and visualized using 0.05% DAB.



Immunofluorescence staining of HepG2 cells with CSB-PA853268LA01HU at 1:200, counter-stained with DAPI. The cells were fixed in 4% formaldehyde, permeated by 0.2% TritonX-100, and blocked in 10% normal Goat Serum. The cells were then incubated with the antibody overnight at 4°C. Nuclear DNA was labeled in blue with DAPI. The secondary antibody was Alexa Fluor 488-conjugated AffiniPure Goat Anti-Rabbit IgG(H+L)