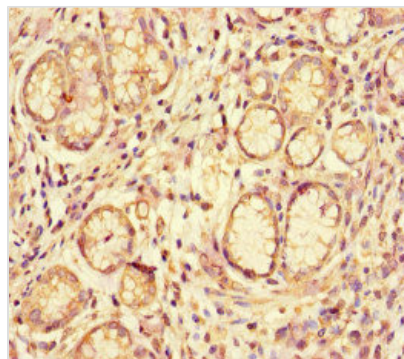




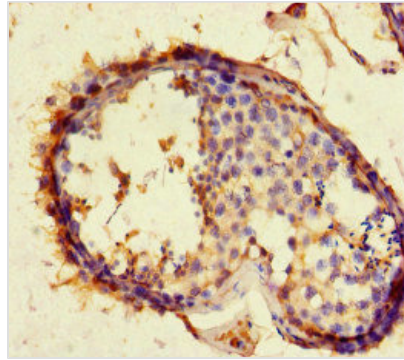
ACE2 Antibody

Product Code	CSB-PA866317LA01HU
Storage	Upon receipt, store at -20°C or -80°C. Avoid repeated freeze.
Uniprot No.	Q9BYF1
Immunogen	Recombinant Human Angiotensin-converting enzyme 2 protein (395-638AA)
Raised In	Rabbit
Species Reactivity	Human
Tested Applications	ELISA, IHC, IF; Recommended dilution: IHC:1:20-1:200, IF:1:50-1:200
Form	Liquid
Conjugate	Non-conjugated
Storage Buffer	Preservative: 0.03% Proclin 300 Constituents: 50% Glycerol, 0.01M PBS, PH 7.4
Purification Method	>95%, Protein G purified
Isotype	IgG
Clonality	Polyclonal
Alias	Angiotensin-converting enzyme 2 (EC 3.4.17.23) (ACE-related carboxypeptidase) (Angiotensin-converting enzyme homolog) (ACEH) (Metalloprotease MPROT15) [Cleaved into: Processed angiotensin-converting enzyme 2], ACE2
Immunogen Species	Homo sapiens (Human)
Research Area	Cell Biology
Target Names	ACE2

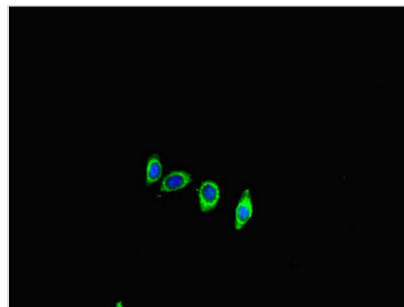
Image



Immunohistochemistry of paraffin-embedded human gastric cancer using CSB-PA866317LA01HU at dilution of 1:100



Immunohistochemistry of paraffin-embedded human testis tissue using CSB-PA866317LA01HU at dilution of 1:100



Immunofluorescent analysis of HepG2 cells using CSB-PA866317LA01HU at dilution of 1:100 and Alexa Fluor 488-conjugated AffiniPure Goat Anti-Rabbit IgG(H+L)

Usage

For Research Use Only. Not for use in diagnostic or therapeutic procedures.