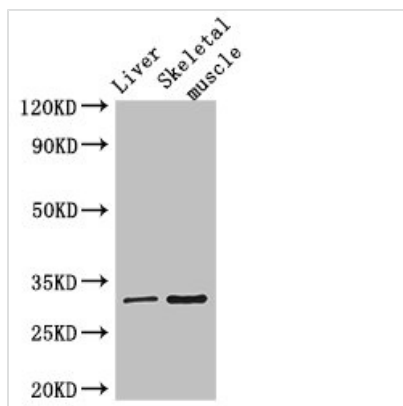


RSPH9 Antibody

Product Code	CSB-PA867129LA01HU
Storage	Upon receipt, store at -20°C or -80°C. Avoid repeated freeze.
Uniprot No.	Q9H1X1
Immunogen	Recombinant Human Radial spoke head protein 9 homolog protein (62-171AA)
Raised In	Rabbit
Species Reactivity	Human, Mouse
Tested Applications	ELISA, WB, IHC; Recommended dilution: WB:1:2000-1:5000, IHC:1:20-1:200
Form	Liquid
Conjugate	Non-conjugated
Storage Buffer	Preservative: 0.03% Proclin 300 Constituents: 50% Glycerol, 0.01M PBS, PH 7.4
Purification Method	>95%, Protein G purified
Isotype	IgG
Clonality	Polyclonal
Alias	Radial spoke head protein 9 homolog, RSPH9, C6orf206 MRPS18AL1
Immunogen Species	Homo sapiens (Human)
Research Area	Cell Biology
Target Names	RSPH9

Image



Western Blot

Positive WB detected in: Mouse liver tissue,
Mouse skeletal muscle tissue

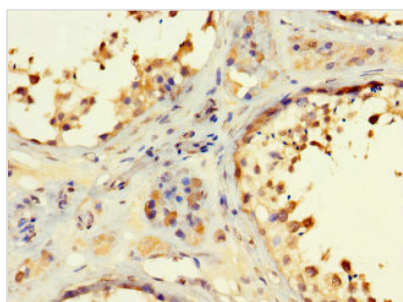
All lanes: RSPH9 antibody at 3μg/ml

Secondary

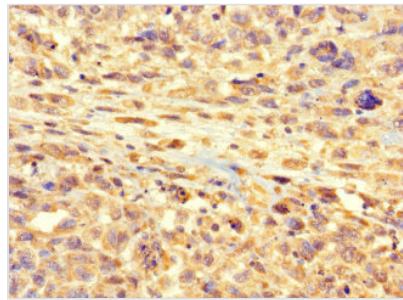
Goat polyclonal to rabbit IgG at 1/50000 dilution

Predicted band size: 32, 35 kDa

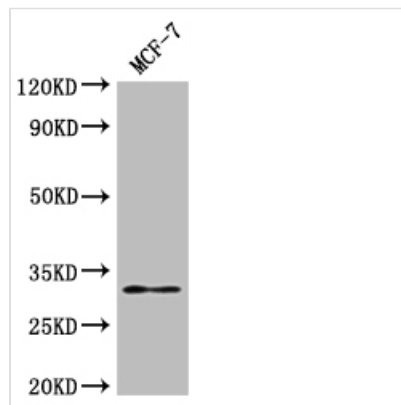
Observed band size: 32 kDa



Immunohistochemistry of paraffin-embedded
human testis tissue using CSB-
PA867129LA01HU at dilution of 1:100



Immunohistochemistry of paraffin-embedded human melanoma using CSB-PA867129LA01HU at dilution of 1:100



Western Blot

Positive WB detected in: MCF-7 whole cell lysate

All lanes: RSPH9 antibody at 1:2000

Secondary

Goat polyclonal to rabbit IgG at 1/50000 dilution

Predicted band size: 32, 35 kDa

Observed band size: 32 kDa