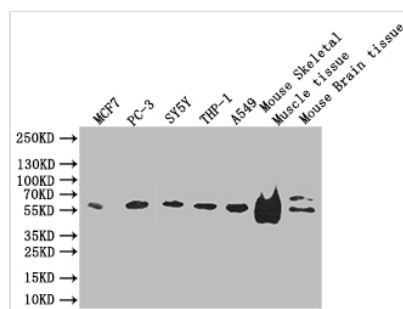




IFT46 Antibody

Product Code	CSB-PA873621LA01HU
Storage	Upon receipt, store at -20°C or -80°C. Avoid repeated freeze.
Uniprot No.	Q9NQC8
Immunogen	Recombinant Human Intraflagellar transport protein 46 homolog protein (1-304AA)
Raised In	Rabbit
Species Reactivity	Human, Mouse
Tested Applications	ELISA, WB, IHC; Recommended dilution: WB:1:1000-1:5000, IHC:1:20-1:200
Form	Liquid
Conjugate	Non-conjugated
Storage Buffer	Preservative: 0.03% Proclin 300 Constituents: 50% Glycerol, 0.01M PBS, PH 7.4
Purification Method	>95%, Protein G purified
Isotype	IgG
Clonality	Polyclonal
Product Type	Polyclonal Antibody
Immunogen Species	Homo sapiens (Human)
Research Area	Signal Transduction
Target Names	IFT46

Image



Western Blot

Positive WB detected in: MCF7 whole cell lysate, PC-3 whole cell lysate, SY5Y whole cell lysate, THP-1 whole cell lysate, A549 whole cell lysate, Mouse Skeletal Muscle tissue lysate, Mouse Brain tissue lysate

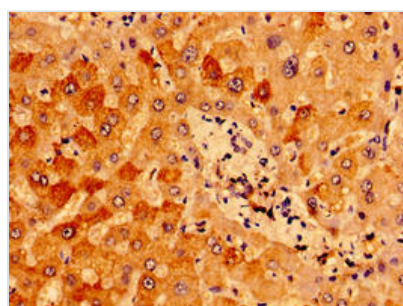
All lanes: ZDHHC12 antibody at 1:1000

Secondary

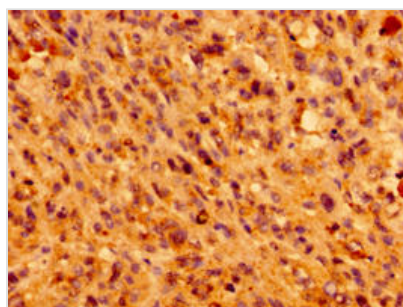
Goat polyclonal to rabbit IgG at 1/50000 dilution

Predicted band size: 35/41 kDa

Observed band size: 55 kDa



Immunohistochemistry of paraffin-embedded human liver tissue using CSB-PA873621LA01HU at dilution of 1:100



Immunohistochemistry of paraffin-embedded human melanoma using CSB-PA873621LA01HU at dilution of 1:100