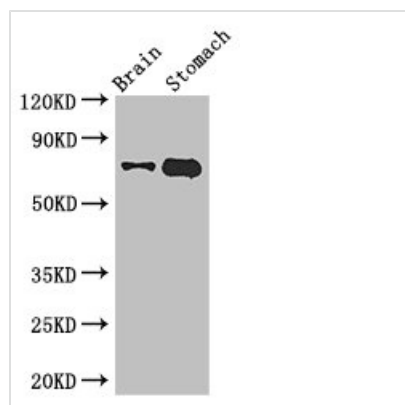




EXD2 Antibody

Product Code	CSB-PA873662LA01HU
Storage	Upon receipt, store at -20°C or -80°C. Avoid repeated freeze.
Uniprot No.	Q9NVH0
Immunogen	Recombinant Human Exonuclease 3'-5' domain-containing protein 2 protein (137-245AA)
Raised In	Rabbit
Species Reactivity	Human, Mouse
Tested Applications	ELISA, WB, IHC; Recommended dilution: WB:1:2000-1:10000, IHC:1:20-1:200
Form	Liquid
Conjugate	Non-conjugated
Storage Buffer	Preservative: 0.03% Proclin 300 Constituents: 50% Glycerol, 0.01M PBS, PH 7.4
Purification Method	>95%, Protein G purified
Isotype	IgG
Clonality	Polyclonal
Alias	Exonuclease 3'-5' domain-containing protein 2 (EC 3.1.11.1) (Exonuclease 3'-5' domain-like-containing protein 2), EXD2, C14orf114 EXDL2
Immunogen Species	Homo sapiens (Human)
Research Area	Epigenetics and Nuclear Signaling
Target Names	EXD2

Image



Western Blot

Positive WB detected in: Mouse brain tissue,
Mouse stomach tissue

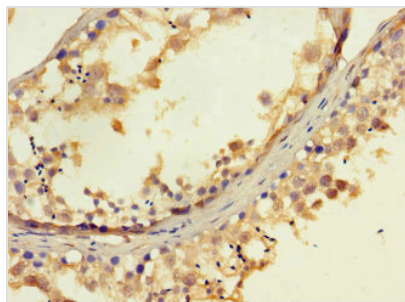
All lanes: EXD2 antibody at 2.8µg/ml

Secondary

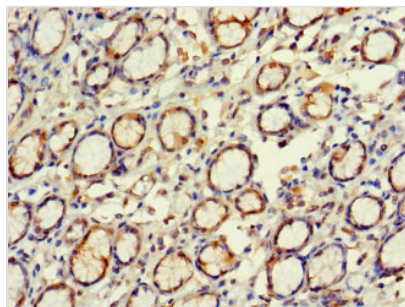
Goat polyclonal to rabbit IgG at 1/50000 dilution

Predicted band size: 71, 57 kDa

Observed band size: 71 kDa



Immunohistochemistry of paraffin-embedded human testis tissue using CSB-PA873662LA01HU at dilution of 1:100



Immunohistochemistry of paraffin-embedded human gastric cancer using CSB-PA873662LA01HU at dilution of 1:100