



# Recombinant Human Beclin 1-associated autophagy-related key regulator (ATG14)

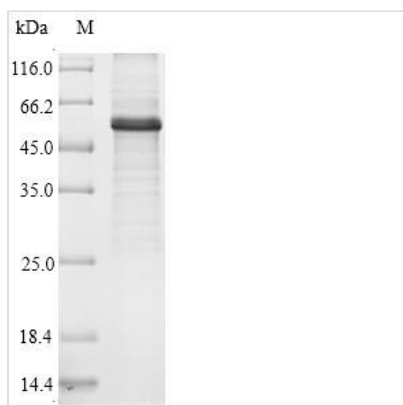
<b>Product Code</b>	CSB-EP741052HU
<b>Relevance</b>	Required for both basal and inducible autophagy. Determines the localization of the autophagy-specific PI3-kinase complex PI3KC3-C1 (PubMed:18843052, PubMed:19050071). Plays a role in autophagosome formation and MAP1LC3/LC3 conjugation to phosphatidylethanolamine (PubMed:19270696, PubMed:20713597). Promotes BECN1 translocation from the trans-Golgi network to autophagosomes (PubMed:20713597). Enhances PIK3C3 activity in a BECN1-dependent manner. Essential for the autophagy-dependent phosphorylation of BECN1 (PubMed:23878393). Stimulates the phosphorylation of BECN1, but suppresses the phosphorylation PIK3C3 by AMPK (PubMed:23878393). Binds to STX17-SNAP29 binary t-SNARE complex on autophagosomes and primes it for VAMP8 interaction to promote autophagosome-endolysosome fusion (PubMed:25686604). Modulates the hepatic lipid metabolism (By similarity).
<b>Abbreviation</b>	Recombinant Human ATG14 protein
<b>Storage</b>	The shelf life is related to many factors, storage state, buffer ingredients, storage temperature and the stability of the protein itself. Generally, the shelf life of liquid form is 6 months at -20°C/-80°C. The shelf life of lyophilized form is 12 months at -20°C/-80°C.
<b>Uniprot No.</b>	Q6ZNE5
<b>Alias</b>	Autophagy-related protein 14-like protein Short name:Atg14L
<b>Product Type</b>	Recombinant Protein
<b>Immunogen Species</b>	Homo sapiens (Human)
<b>Purity</b>	≥ 90% as determined by SDS-PAGE.
<b>Sequence</b>	MASPSGK GARALEAPGCGPRPLARDLVDSVDDAEGLYVAVERCPLCNTTRRR LTCAKCVQSGDFVYFDGRDRERFIDKKERLSRLKSKQEEFQKEVLKAMEGKWI TDQLRWKIMSCKMRIEQLKQTICKGNEEMKENSEGLLKTKEKNQKLYSRAQR HQEKKEKIQRHRKLGDLVEKKTIDLRSHYERLANLRRSHILELTSVIFPIEEVKT GVRDPADVSSSESDSAMTSSTVSKLAEARRTTYLSGRWVCDDHNGDTSISITG PWISLPNNGDYSAYYSWVEEKTTQGPDMEQSNPAYTISAALCYATQLVNILS HILDVNLPKCLCNSEFCGENLSKQKFTRAVKKNANILYLCFSQHVNL DQLQPL HTLRNLMYLVSPSSEHLGRSGPFVVRADLEESMEFVDPGVAGESDES GDERV SDEETDLGTDWENLPSPRFCDIPSQSVEVSQSQSTQASPPPIASSSAGGMIS AASVTSWFKAYTGHR
<b>Research Area</b>	Others
<b>Source</b>	E.coli
<b>Target Names</b>	ATG14
<b>Protein Names</b>	Recommended name: Beclin 1-associated autophagy-related key regulator



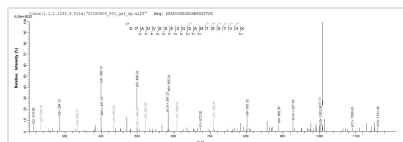
Short name= Barkor Alternative name(s): Autophagy-related protein 14-like protein Short name= Atg14L

<b>Expression Region</b>	1-492aa
<b>Notes</b>	Repeated freezing and thawing is not recommended. Store working aliquots at 4°C for up to one week.
<b>Tag Info</b>	N-terminal 10xHis-tagged and C-terminal Myc-tagged
<b>Mol. Weight</b>	60.3kDa
<b>Protein Length</b>	Full Length

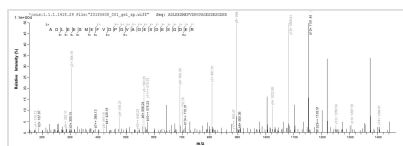
### Image



(Tris-Glycine gel) Discontinuous SDS-PAGE (reduced) with 5% enrichment gel and 15% separation gel.



Based on the SEQUEST from database of E.coli host and target protein, the LC-MS/MS Analysis result of CSB-EP741052HU could indicate that this peptide derived from E.coli-expressed Homo sapiens (Human) ATG14.



Based on the SEQUEST from database of E.coli host and target protein, the LC-MS/MS Analysis result of CSB-EP741052HU could indicate that this peptide derived from E.coli-expressed Homo sapiens (Human) ATG14.

### Reconstitution

We recommend that this vial be briefly centrifuged prior to opening to bring the contents to the bottom. Please reconstitute protein in deionized sterile water to a concentration of 0.1-1.0 mg/mL. We recommend to add 5-50% of glycerol (final concentration) and aliquot for long-term storage at -20°C/-80°C. Our default final concentration of glycerol is 50%. Customers could use it as reference.

### Shelf Life

The shelf life is related to many factors, storage state, buffer ingredients, storage temperature and the stability of the protein itself. Generally, the shelf life of liquid form is 6 months at -20°C/-80°C. The shelf life of lyophilized form is 12 months at -20°C/-80°C.