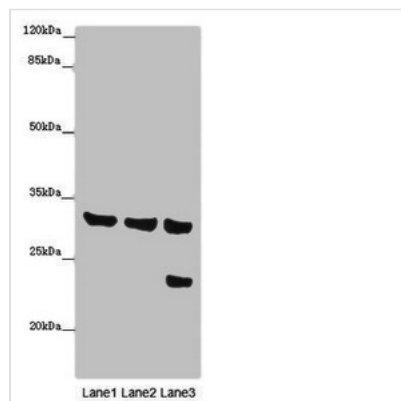




SLC25A10 Antibody

Product Code	CSB-PA883371LA01HU
Storage	Upon receipt, store at -20°C or -80°C. Avoid repeated freeze.
Uniprot No.	Q9UBX3
Immunogen	Recombinant Human Mitochondrial dicarboxylate carrier protein (124-162AA)
Raised In	Rabbit
Species Reactivity	Human, Mouse
Tested Applications	ELISA, WB, IHC; Recommended dilution: WB:1:1000-1:5000, IHC:1:20-1:200
Form	Liquid
Conjugate	Non-conjugated
Storage Buffer	Preservative: 0.03% Proclin 300 Constituents: 50% Glycerol, 0.01M PBS, PH 7.4
Purification Method	>95%, Protein G purified
Isotype	IgG
Clonality	Polyclonal
Alias	Mitochondrial dicarboxylate carrier (Solute carrier family 25 member 10), SLC25A10, DIC
Immunogen Species	Homo sapiens (Human)
Research Area	Others
Target Names	SLC25A10

Image



Western blot

All lanes: SLC25A10 antibody at 16µg/ml

Lane 1: Mouse liver tissue

Lane 2: Mouse kidney tissue

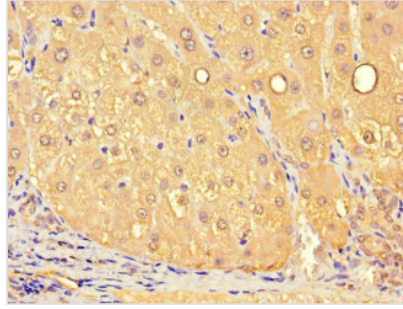
Lane 3: HepG2 whole cell lysate

Secondary

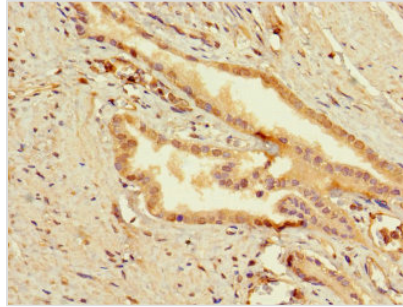
Goat polyclonal to rabbit IgG at 1/10000 dilution

Predicted band size: 32, 33 kDa

Observed band size: 32, 24 kDa



Immunohistochemistry of paraffin-embedded human liver tissue using CSB-PA883371LA01HU at dilution of 1:100



Immunohistochemistry of paraffin-embedded human prostata cancer using CSB-PA883371LA01HU at dilution of 1:100

Usage

For Research Use Only. Not for use in diagnostic or therapeutic procedures.