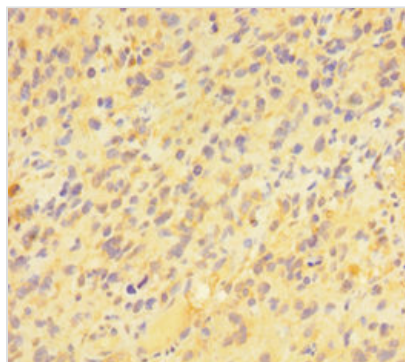




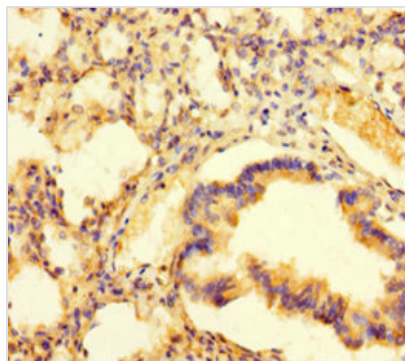
PAG1 Antibody

| | |
|----------------------------|--|
| Product Code | CSB-PA885746LA01HU |
| Storage | Upon receipt, store at -20°C or -80°C. Avoid repeated freeze. |
| Uniprot No. | Q9NWQ8 |
| Immunogen | Recombinant Human Phosphoprotein associated with glycosphingolipid-enriched microdomains 1 protein (97-432AA) |
| Raised In | Rabbit |
| Species Reactivity | Human, Mouse |
| Tested Applications | ELISA, WB, IHC, IF; Recommended dilution: WB:1:2000-1:5000, IHC:1:20-1:200, IF:1:50-1:200 |
| Form | Liquid |
| Conjugate | Non-conjugated |
| Storage Buffer | Preservative: 0.03% Proclin 300 Constituents: 50% Glycerol, 0.01M PBS, PH 7.4 |
| Purification Method | >95%, Protein G purified |
| Isotype | IgG |
| Clonality | Polyclonal |
| Alias | Phosphoprotein associated with glycosphingolipid-enriched microdomains 1 (Csk-binding protein) (Transmembrane adapter protein PAG) (Transmembrane phosphoprotein Cbp), PAG1, CBP PAG |
| Immunogen Species | Homo sapiens (Human) |
| Research Area | Signal Transduction |
| Target Names | PAG1 |

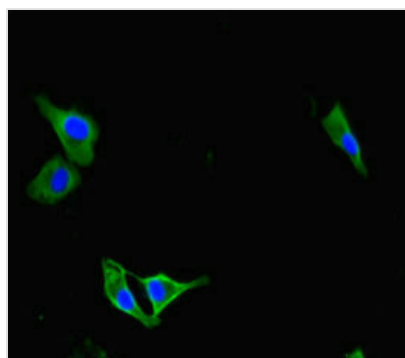
Image



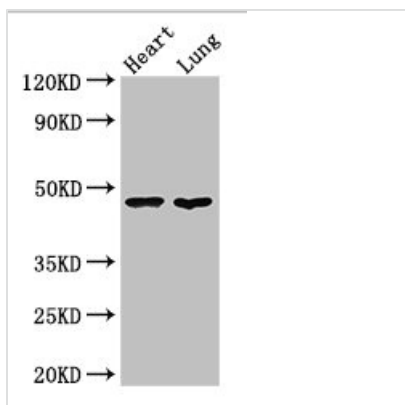
Immunohistochemistry of paraffin-embedded human glioma using CSB-PA885746LA01HU at dilution of 1:100



Immunohistochemistry of paraffin-embedded human lung tissue using CSB-PA885746LA01HU at dilution of 1:100



Immunofluorescent analysis of HeLa cells using CSB-PA885746LA01HU at dilution of 1:100 and Alexa Fluor 488-conjugated AffiniPure Goat Anti-Rabbit IgG(H+L)



Western Blot
 Positive WB detected in: Mouse heart tissue, Mouse lung tissue
 All lanes: PAG1 antibody at 3µg/ml
 Secondary
 Goat polyclonal to rabbit IgG at 1/50000 dilution
 Predicted band size: 47 kDa
 Observed band size: 47 kDa

Usage

For Research Use Only. Not for use in diagnostic or therapeutic procedures.