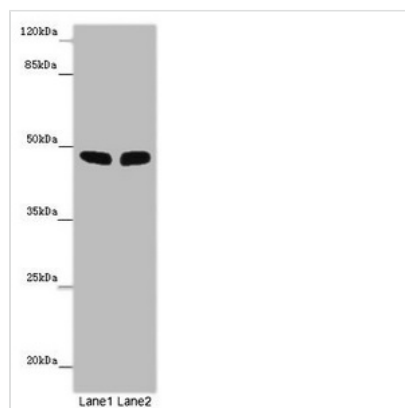




# FBXL21 Antibody

<b>Product Code</b>	CSB-PA891953LA01HU
<b>Storage</b>	Upon receipt, store at -20°C or -80°C. Avoid repeated freeze.
<b>Uniprot No.</b>	Q9UKT6
<b>Immunogen</b>	Recombinant Human F-box/LRR-repeat protein 21 protein (78-137AA)
<b>Raised In</b>	Rabbit
<b>Species Reactivity</b>	Human, Mouse
<b>Tested Applications</b>	ELISA, WB, IHC, IF; Recommended dilution: WB:1:1000-1:5000, IHC:1:20-1:200, IF:1:50-1:200
<b>Form</b>	Liquid
<b>Conjugate</b>	Non-conjugated
<b>Storage Buffer</b>	Preservative: 0.03% Proclin 300 Constituents: 50% Glycerol, 0.01M PBS, PH 7.4
<b>Purification Method</b>	>95%, Protein G purified
<b>Isotype</b>	IgG
<b>Clonality</b>	Polyclonal
<b>Alias</b>	F-box/LRR-repeat protein 21 (F-box and leucine-rich repeat protein 21) (F-box and leucine-rich repeat protein 3B) (F-box/LRR-repeat protein 3B), FBXL21, FBL21 FBL3 FBXL3B FBXL3P
<b>Immunogen Species</b>	Homo sapiens (Human)
<b>Research Area</b>	Others
<b>Target Names</b>	FBXL21

## Image



### Western blot

All lanes: FBL21 antibody at 10 µg/ml

Lane 1: Mouse heart tissue

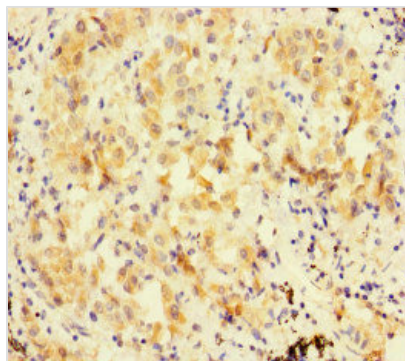
Lane 2: Mouse skeletal muscle tissue

Secondary

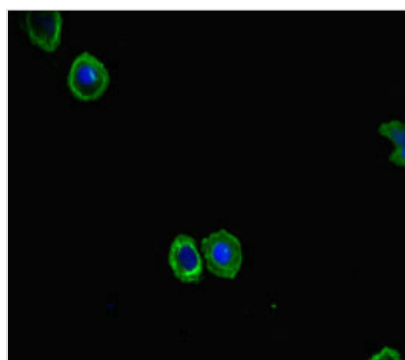
Goat polyclonal to rabbit IgG at 1/10000 dilution

Predicted band size: 49 kDa

Observed band size: 49 kDa



Immunohistochemistry of paraffin-embedded human lung cancer using CSB-PA891953LA01HU at dilution of 1:100



Immunofluorescent analysis of HepG2 cells using CSB-PA891953LA01HU at dilution of 1:100 and Alexa Fluor 488-conjugated AffiniPure Goat Anti-Rabbit IgG(H+L)

## Usage

For Research Use Only. Not for use in diagnostic or therapeutic procedures.