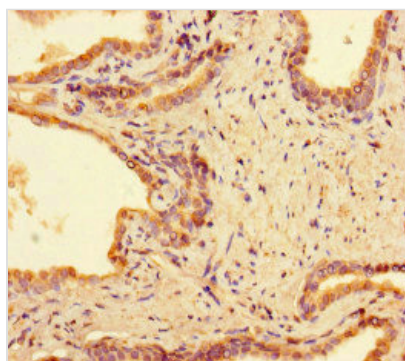




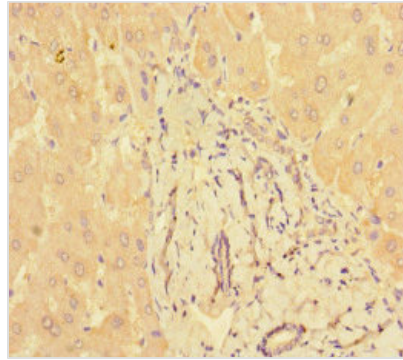
PPM1H Antibody

Product Code	CSB-PA892345LA01HU
Storage	Upon receipt, store at -20°C or -80°C. Avoid repeated freeze.
Uniprot No.	Q9ULR3
Immunogen	Recombinant Human Protein phosphatase 1H protein (73-289AA)
Raised In	Rabbit
Species Reactivity	Human, Mouse
Tested Applications	ELISA, WB, IHC, IF; Recommended dilution: WB:1:2000-1:10000, IHC:1:20-1:200, IF:1:50-1:200
Form	Liquid
Conjugate	Non-conjugated
Storage Buffer	Preservative: 0.03% Proclin 300 Constituents: 50% Glycerol, 0.01M PBS, PH 7.4
Purification Method	>95%, Protein G purified
Isotype	IgG
Clonality	Polyclonal
Alias	Protein phosphatase 1H (EC 3.1.3.16), PPM1H, ARHCL1 KIAA1157 URCC2
Immunogen Species	Homo sapiens (Human)
Research Area	Others
Target Names	PPM1H

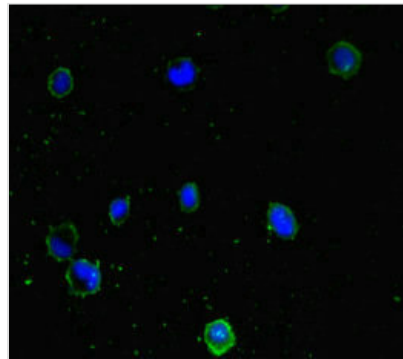
Image



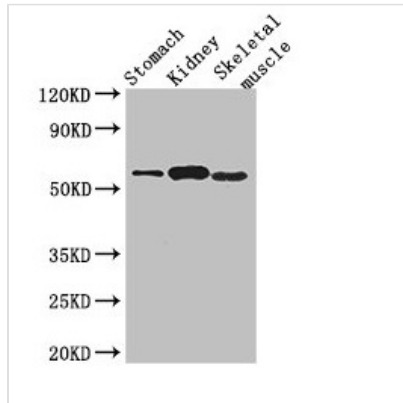
Immunohistochemistry of paraffin-embedded human prostate cancer using CSB-PA892345LA01HU at dilution of 1:100



Immunohistochemistry of paraffin-embedded human liver tissue using CSB-PA892345LA01HU at dilution of 1:100



Immunofluorescent analysis of MCF-7 cells using CSB-PA892345LA01HU at dilution of 1:100 and Alexa Fluor 488-conjugated AffiniPure Goat Anti-Rabbit IgG(H+L)



Western Blot

Positive WB detected in: Mouse stomach tissue, Mouse kidney tissue, Mouse skeletal muscle tissue

All lanes: PPM1H antibody at 3.2µg/ml

Secondary

Goat polyclonal to rabbit IgG at 1/50000 dilution

Predicted band size: 57 kDa

Observed band size: 57 kDa

Usage

For Research Use Only. Not for use in diagnostic or therapeutic procedures.