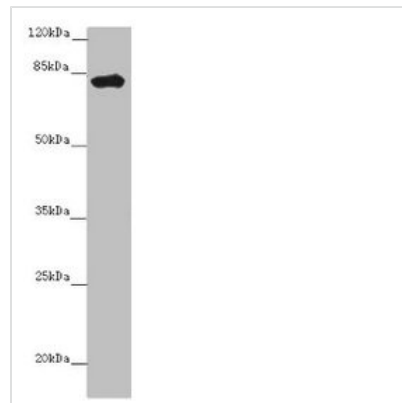




LRCH1 Antibody

Product Code	CSB-PA897471LA01HU
Abbreviation	Leucine-rich repeat and calponin homology domain-containing protein 1
Storage	Upon receipt, store at -20°C or -80°C. Avoid repeated freeze.
Uniprot No.	Q9Y2L9
Immunogen	Recombinant Human Leucine-rich repeat and calponin homology domain-containing protein 1 protein (1-105AA)
Raised In	Rabbit
Species Reactivity	Human
Tested Applications	ELISA, WB, IHC, IF; Recommended dilution: WB:1:1000-1:5000, IHC:1:20-1:200, IF:1:50-1:200
Form	Liquid
Conjugate	Non-conjugated
Storage Buffer	Preservative: 0.03% Proclin 300 Constituents: 50% Glycerol, 0.01M PBS, PH 7.4
Purification Method	>95%, Protein G purified
Isotype	IgG
Clonality	Polyclonal
Alias	Leucine-rich repeat and calponin homology domain-containing protein 1 (Calponin homology domain-containing protein 1) (Neuronal protein 81) (NP81), LRCH1, CHDC1 KIAA1016
Species	Human
Research Area	Cell Biology
Target Names	LRCH1

Image



Western blot

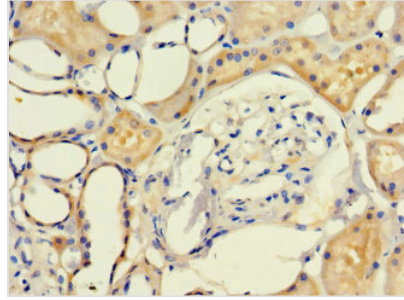
All lanes: LRCH1 antibody at 15µg/ml + Hela whole cell lysate

Secondary

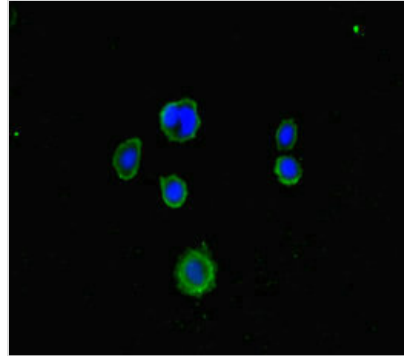
Goat polyclonal to rabbit IgG at 1/10000 dilution

Predicted band size: 81, 78, 85 kDa

Observed band size: 81 kDa



Immunohistochemistry of paraffin-embedded human kidney tissue using CSB-PA897471LA01HU at dilution of 1:100



Immunofluorescent analysis of MCF-7 cells using CSB-PA897471LA01HU at dilution of 1:100 and Alexa Fluor 488-conjugated AffiniPure Goat Anti-Rabbit IgG(H+L)