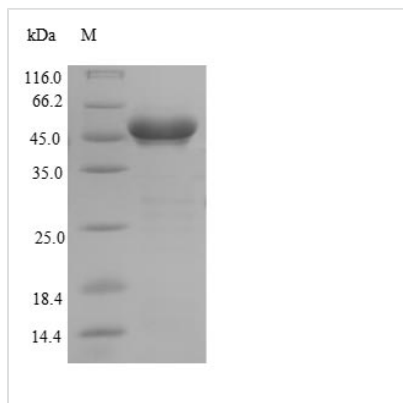


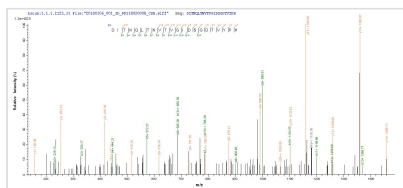


Recombinant Staphylococcus aureus Clumping factor A (clfA), partial

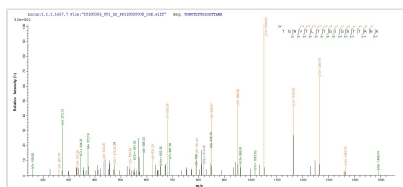
Product Code	CSB-EP753416SKW
Relevance	Cell surface-associated protein implicated in virulence. Promotes bacterial attachment exclusively to the gamma-chain of human fibrinogen. Induces formation of bacterial clumps (By similarity).
Abbreviation	Recombinant Staphylococcus aureus clfA protein, partial
Storage	The shelf life is related to many factors, storage state, buffer ingredients, storage temperature and the stability of the protein itself. Generally, the shelf life of liquid form is 6 months at -20°C/-80°C. The shelf life of lyophilized form is 12 months at -20°C/-80°C.
Uniprot No.	Q6GB45
Alias	Fibrinogen receptor A Fibrinogen-binding protein A
Product Type	Recombinant Protein
Immunogen Species	Staphylococcus aureus
Purity	Greater than 90% as determined by SDS-PAGE.
Sequence	GKDITNQLTNTVTGIDSGDTVYPHQAGYVKLNYGFSVPNSAVKGDTFKITVPKE LNLNGVTSTAKVPPIMAGDQVLANGVIDSDGNVIYFTDYVDTKENVTANITMP AYIDPENVTKTGNVTLTTGIGSTTANKTVLVDYEKYGKFYNLSIKGTIDQIDKTN NTYRQTIYVNPSPGDNVIAPVLTGNLKPNTDSNALIDQQNTSIKVYKVDNAADLS ESYFVNPENFEDVTNSVNITFPNPNQYKVEFNTPPDDQITTPYIVVVNGHIDPNS KGDALRSTLYGYDSRFVWRSMWDNEVAFNNGSGSGDGIDKPVVPEQPDE PGEIEPIPE
Research Area	Microbiology
Source	E.coli
Target Names	clfA
Protein Names	Recommended name: Clumping factor A Alternative name(s): Fibrinogen receptor A Fibrinogen-binding protein A
Expression Region	228-558aa
Notes	Repeated freezing and thawing is not recommended. Store working aliquots at 4°C for up to one week.
Tag Info	N-terminal 6xHis-SUMO-tagged
Mol. Weight	52.1kDa
Protein Length	Partial
Image	



(Tris-Glycine gel) Discontinuous SDS-PAGE (reduced) with 5% enrichment gel and 15% separation gel.



Based on the SEQUEST from database of E.coli host and target protein, the LC-MS/MS Analysis result of CSB-EP753416SKW could indicate that this peptide derived from E.coli-expressed Staphylococcus aureus (strain MSSA476) clfA.



Based on the SEQUEST from database of E.coli host and target protein, the LC-MS/MS Analysis result of CSB-EP753416SKW could indicate that this peptide derived from E.coli-expressed Staphylococcus aureus (strain MSSA476) clfA.

Reconstitution

We recommend that this vial be briefly centrifuged prior to opening to bring the contents to the bottom. Please reconstitute protein in deionized sterile water to a concentration of 0.1-1.0 mg/mL. We recommend to add 5-50% of glycerol (final concentration) and aliquot for long-term storage at -20°C/-80°C. Our default final concentration of glycerol is 50%. Customers could use it as reference.

Shelf Life

The shelf life is related to many factors, storage state, buffer ingredients, storage temperature and the stability of the protein itself. Generally, the shelf life of liquid form is 6 months at -20°C/-80°C. The shelf life of lyophilized form is 12 months at -20°C/-80°C.