



# Recombinant Human Cyclic AMP-responsive element-binding protein 3-like protein 2 (CREB3L2)

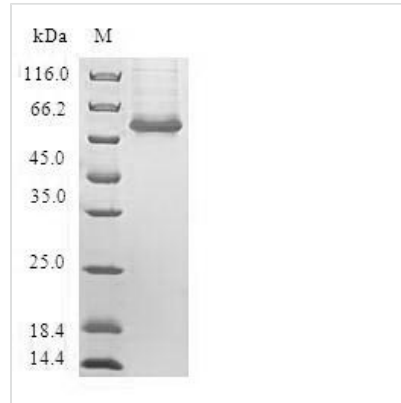
<b>Product Code</b>	CSB-EP754617HU
<b>Relevance</b>	Transcription factor involved in unfolded protein response (UPR). In the absence of endoplasmic reticulum (ER) stress, inserted into ER membranes, with N-terminal DNA-binding and transcription activation domains oriented toward the cytosolic face of the membrane. In response to ER stress, transported to the Golgi, where it is cleaved in a site-specific manner by resident proteases S1P/MBTPS1 and S2P/MBTPS2. The released N-terminal cytosolic domain is translocated to the nucleus to effect transcription of specific target genes. Plays a critical role in chondrogenesis by activating the transcription of SEC23A, which promotes the transport and secretion of cartilage matrix proteins, and possibly that of ER biogenesis-related genes. In a neuroblastoma cell line, protects cells from ER stress-induced death. In vitro activates transcription of target genes via direct binding to the CRE site.
<b>Abbreviation</b>	Recombinant Human CREB3L2 protein
<b>Storage</b>	The shelf life is related to many factors, storage state, buffer ingredients, storage temperature and the stability of the protein itself. Generally, the shelf life of liquid form is 6 months at -20°C/-80°C. The shelf life of lyophilized form is 12 months at -20°C/-80°C.
<b>Uniprot No.</b>	Q70SY1
<b>Alias</b>	BBF2 human homolog on chromosome 7
<b>Product Type</b>	Recombinant Protein
<b>Immunogen Species</b>	Homo sapiens (Human)
<b>Purity</b>	≥ 90% as determined by SDS-PAGE.
<b>Sequence</b>	MEVLESGEQGVLQWDRKLSLSEPGDGEALMYHTHFSELLDEF SQNVLGQLLNDPFLSEKSVSMEVEPSPTSPAPLIQAEHSYSLCEEPR AQSPFTHITSDSFNDD EVESEKWYLSTDFPSTSIKTEPVTDEPPPGLVPSVTLTITAISTPLEKEEPLEMNTGVDSSCQTIIPKIKLEPHEVDQFLNFSPKEGLSALPVSLWVMDMVSGSTER EYGERAGMSLYHRCCSWLYEIALFLKNKNFASK
<b>Research Area</b>	Epigenetics and Nuclear Signaling
<b>Source</b>	E.coli
<b>Target Names</b>	CREB3L2
<b>Expression Region</b>	1-247aa
<b>Notes</b>	Repeated freezing and thawing is not recommended. Store working aliquots at 4°C for up to one week.
<b>Tag Info</b>	N-terminal GST-tagged



**Mol. Weight** 54.6kDa

**Protein Length** Full Length of BC063666

**Image**



(Tris-Glycine gel) Discontinuous SDS-PAGE (reduced) with 5% enrichment gel and 15% separation gel.

**Reconstitution**

We recommend that this vial be briefly centrifuged prior to opening to bring the contents to the bottom. Please reconstitute protein in deionized sterile water to a concentration of 0.1-1.0 mg/mL. We recommend to add 5-50% of glycerol (final concentration) and aliquot for long-term storage at -20°C/-80°C. Our default final concentration of glycerol is 50%. Customers could use it as reference.

**Shelf Life**

The shelf life is related to many factors, storage state, buffer ingredients, storage temperature and the stability of the protein itself. Generally, the shelf life of liquid form is 6 months at -20°C/-80°C. The shelf life of lyophilized form is 12 months at -20°C/-80°C.