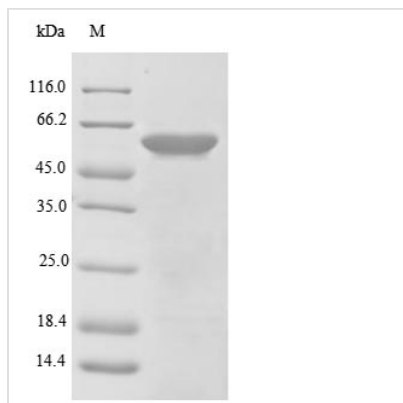




Recombinant Mouse C-type lectin domain family 18 member A (Clec18a)

Product Code	CSB-EP759740MO
Abbreviation	Recombinant Mouse Clec18a protein
Storage	The shelf life is related to many factors, storage state, buffer ingredients, storage temperature and the stability of the protein itself. Generally, the shelf life of liquid form is 6 months at -20°C/-80°C. The shelf life of lyophilized form is 12 months at -20°C/-80°C.
Uniprot No.	Q7TSQ1
Product Type	Recombinant Protein
Immunogen Species	Mus musculus (Mouse)
Purity	Greater than 85% as determined by SDS-PAGE.
Sequence	MTGAEWKLMSGLEDTPARLHEHGEASWTAERSHVCSIRQANDSAGALPV AGKPEPMARSLASAPVSPWHHMDRGSTTPAKARSHSASYHCPSSSQICVPG VGSPSAGYGDVPGASGHRPNLLSWPPALSRKESFLILTAHNRLRSRVHPPAA NMQRMDWSESLAQLAEARAALCVTSVTPNLASTPGHNSHVGNVQLMPMG SASFVEVVNLWFAEGLQYRHGDAECAHNATCAHYTQLVWATSSQLGCGRQP CFVDQEAMEAFVCAYSPPGGNWDINGKTVAPYKKGTWCSLCTARVSGCFKAW DHAGGLCEVPRNPCRMSRNLGHLNISTCRCHCQPGYTGRYCQVRCVQCV HGQFRKEECSCICDVGYGGAQCATKVGFPFHTCDLRIDGDCFMVSPEADTY GAKMKCQGGVLAQIESQKVQDILAFYLRLETTNEVTDSDFETKNFWIGLT YKAAKDSFRWTTGEHQSFTSFAFGQPDNQGFQNCVEMQASAAFNWNDQRC KTRNRYICQFAQKHYSRWEPGP
Research Area	Others
Source	E.coli
Target Names	Clec18a
Protein Names	Recommended name: C-type lectin domain family 18 member A Alternative name(s): Mannose receptor-like protein
Expression Region	1-534aa
Notes	Repeated freezing and thawing is not recommended. Store working aliquots at 4°C for up to one week.
Tag Info	N-terminal 6xHis-tagged
Mol. Weight	62.6 kDa
Protein Length	Full Length
Image	



(Tris-Glycine gel) Discontinuous SDS-PAGE (reduced) with 5% enrichment gel and 15% separation gel.

Reconstitution

We recommend that this vial be briefly centrifuged prior to opening to bring the contents to the bottom. Please reconstitute protein in deionized sterile water to a concentration of 0.1-1.0 mg/mL. We recommend to add 5-50% of glycerol (final concentration) and aliquot for long-term storage at -20°C/-80°C. Our default final concentration of glycerol is 50%. Customers could use it as reference.

Shelf Life

The shelf life is related to many factors, storage state, buffer ingredients, storage temperature and the stability of the protein itself. Generally, the shelf life of liquid form is 6 months at -20°C/-80°C. The shelf life of lyophilized form is 12 months at -20°C/-80°C.