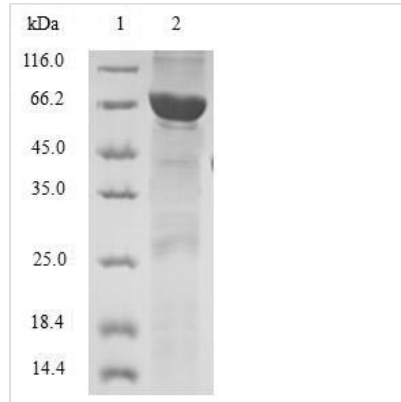




Recombinant Human Twinfilin-2 (TWF2)

| | |
|--------------------------|--|
| Product Code | CSB-EP764224HU |
| Relevance | Actin-binding protein involved in motile and morphological processes. Inhibits actin polymerization, likely by sequestering G-actin. By capping the barbed ends of filaments, it also regulates motility. Seems to play an important role in clathrin-mediated endocytosis and distribution of endocytic organelles. May play a role in regulating the mature length of the middle and short rows of stereocilia |
| Abbreviation | Recombinant Human TWF2 protein |
| Storage | The shelf life is related to many factors, storage state, buffer ingredients, storage temperature and the stability of the protein itself. Generally, the shelf life of liquid form is 6 months at -20°C/-80°C. The shelf life of lyophilized form is 12 months at -20°C/-80°C. |
| Uniprot No. | Q6IBS0 |
| Alias | A6-related protein |
| Product Type | Recombinant Protein |
| Immunogen Species | Homo sapiens (Human) |
| Purity | Greater than 90% as determined by SDS-PAGE. |
| Sequence | AHQGTGIHATEELKEFFAKARAGSVRLIKVVEDEQLVLGASQEPVGRWDQDYD RAVLPLLLDAQPCYLLYRLDSQNAQGFEWLFLAWSPDNSPVRLKMLYAATRA TVKKEFGGGHIKDELFGTVKDDL SFAGYQKHLSSCAAPPLTSAERELQQIRIN EVKTEISVESKHQTLQGLAFPLQPEAQRALQQLKQKMVNVIQMKLDERETIEL VHTEPTDVAQLPSRVPRDAARYHFFLYKHTHEGDPLESVVFIIYSMPGYKCSIK ERMLYSSCKSRLLLDSVEQDFHLEIAKKIEIGDGAELTAEFLYDEVHPKQHAFKQ AFAKPKGPGGKRGHKRLIRGPGENGDDS |
| Research Area | Signal Transduction |
| Source | E.coli |
| Target Names | TWF2 |
| Protein Names | Recommended name: Twinfilin-2 Alternative name(s): A6-related protein Short name= hA6RP Protein tyrosine kinase 9-like Twinfilin-1-like protein |
| Expression Region | 1-349aa |
| Notes | Repeated freezing and thawing is not recommended. Store working aliquots at 4°C for up to one week. |
| Tag Info | N-terminal GST-tagged |
| Mol. Weight | 66.4kDa |
| Protein Length | Full Length |
| Image | |



(Tris-Glycine gel) Discontinuous SDS-PAGE (reduced) with 5% enrichment gel and 15% separation gel.

Reconstitution

We recommend that this vial be briefly centrifuged prior to opening to bring the contents to the bottom. Please reconstitute protein in deionized sterile water to a concentration of 0.1-1.0 mg/mL. We recommend to add 5-50% of glycerol (final concentration) and aliquot for long-term storage at -20°C/-80°C. Our default final concentration of glycerol is 50%. Customers could use it as reference.

Shelf Life

The shelf life is related to many factors, storage state, buffer ingredients, storage temperature and the stability of the protein itself. Generally, the shelf life of liquid form is 6 months at -20°C/-80°C. The shelf life of lyophilized form is 12 months at -20°C/-80°C.