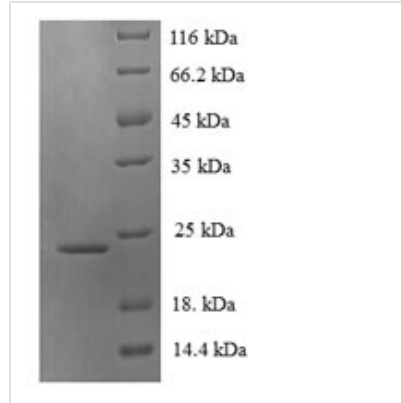




Recombinant Pan troglodytes Lymphotoxin-beta (LTB), partial

Product Code	CSB-EP771253EQV
Relevance	Cytokine that binds to LTBR/TNFRSF3. May play a specific role in immune response regulation. Provides the mbrane anchor for the attachment of the heterotrimeric complex to the cell surface .
Abbreviation	Recombinant Chimpanzee LTB protein, partial
Storage	The shelf life is related to many factors, storage state, buffer ingredients, storage temperature and the stability of the protein itself. Generally, the shelf life of liquid form is 6 months at -20°C/-80°C. The shelf life of lyophilized form is 12 months at -20°C/-80°C.
Uniprot No.	Q862Z7
Alias	Tumor necrosis factor C ;TNF-CTumor necrosis factor ligand superfamily member 3
Product Type	Recombinant Protein
Immunogen Species	Pan troglodytes (Chimpanzee)
Purity	≥ 90% as determined by SDS-PAGE.
Sequence	QDQGGLVTETADPGAQAQQGLGFQKLPEEEPETDLSPGLPAAHLIGAPLKGQ GLGWETTKEQAFLLTSGTQFSDAEGALPQDGLYYLYCLVGYRGRTPPGGGDP QGRSVTLRSSLYRAGGAYGPGTPELLLEGAETVTPVLDPARRQGYGPLWYTS VGFGGLVQLRRGERVYVNISHPDMVDFARGKTFFGAVMVG
Research Area	Others
Source	E.coli
Target Names	LTB
Expression Region	49-244aa
Notes	Repeated freezing and thawing is not recommended. Store working aliquots at 4°C for up to one week.
Tag Info	N-terminal 6xHis-tagged
Mol. Weight	24.8kDa
Protein Length	Extracellular Domain
Image	



(Tris-Glycine gel) Discontinuous SDS-PAGE (reduced) with 5% enrichment gel and 15% separation gel.

Reconstitution

We recommend that this vial be briefly centrifuged prior to opening to bring the contents to the bottom. Please reconstitute protein in deionized sterile water to a concentration of 0.1-1.0 mg/mL. We recommend to add 5-50% of glycerol (final concentration) and aliquot for long-term storage at $-20^{\circ}\text{C}/-80^{\circ}\text{C}$. Our default final concentration of glycerol is 50%. Customers could use it as reference.

Shelf Life

The shelf life is related to many factors, storage state, buffer ingredients, storage temperature and the stability of the protein itself. Generally, the shelf life of liquid form is 6 months at $-20^{\circ}\text{C}/-80^{\circ}\text{C}$. The shelf life of lyophilized form is 12 months at $-20^{\circ}\text{C}/-80^{\circ}\text{C}$.