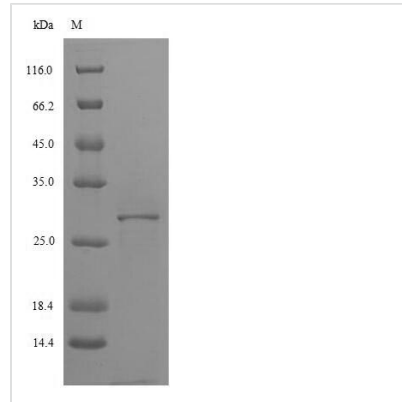




# Recombinant Pig Interleukin-4 receptor subunit alpha (IL4R),Partial

<b>Product Code</b>	CSB-EP771258PI
<b>Relevance</b>	Receptor for both interleukin 4 and interleukin 13. Couples to the JAK1/2/3-STAT6 pathway. The IL4 response is involved in promoting Th2 differentiation. The IL4/IL13 responses are involved in regulating IgE production and, chemokine and mucus production at sites of allergic inflammation. In certain cell types, can signal through activation of insulin receptor substrates, IRS1/IRS2
<b>Abbreviation</b>	Recombinant Pig IL4R protein, partial
<b>Storage</b>	The shelf life is related to many factors, storage state, buffer ingredients, storage temperature and the stability of the protein itself. Generally, the shelf life of liquid form is 6 months at -20°C/-80°C. The shelf life of lyophilized form is 12 months at -20°C/-80°C.
<b>Uniprot No.</b>	Q863Z5
<b>Product Type</b>	Recombinant Protein
<b>Immunogen Species</b>	Sus scrofa (Pig)
<b>Purity</b>	≥ 85% as determined by SDS-PAGE.
<b>Sequence</b>	VRVLEWPICLSDYVSTSTCEWRMAGPVNCSAEFRLSYQLKFFNTENHTTCVP ENRAGSVCVCHMLMESIVIVDTYQLDLWAGEQLLWNSSFKPSQNVKPLAPRN LMVHANISHTWLLTWSNPYPSESYLYSELTLYLVNISNENDPTDFRIYNVTYLG TLRFPANTLKSGAAYSARVKAWAQRYNSTWSEWSPSVKWLNYEOPLEQR
<b>Research Area</b>	Cancer
<b>Source</b>	E.coli
<b>Target Names</b>	IL4R
<b>Protein Names</b>	CD_antigen: CD124
<b>Expression Region</b>	33-240aa
<b>Notes</b>	Repeated freezing and thawing is not recommended. Store working aliquots at 4°C for up to one week.
<b>Tag Info</b>	N-terminal 6xHis-tagged
<b>Mol. Weight</b>	28.2 kDa
<b>Protein Length</b>	Extracellular Domain
<b>Image</b>	



(Tris-Glycine gel) Discontinuous SDS-PAGE (reduced) with 5% enrichment gel and 15% separation gel.

### Reconstitution

We recommend that this vial be briefly centrifuged prior to opening to bring the contents to the bottom. Please reconstitute protein in deionized sterile water to a concentration of 0.1-1.0 mg/mL. We recommend to add 5-50% of glycerol (final concentration) and aliquot for long-term storage at -20°C/-80°C. Our default final concentration of glycerol is 50%. Customers could use it as reference.

### Shelf Life

The shelf life is related to many factors, storage state, buffer ingredients, storage temperature and the stability of the protein itself. Generally, the shelf life of liquid form is 6 months at -20°C/-80°C. The shelf life of lyophilized form is 12 months at -20°C/-80°C.