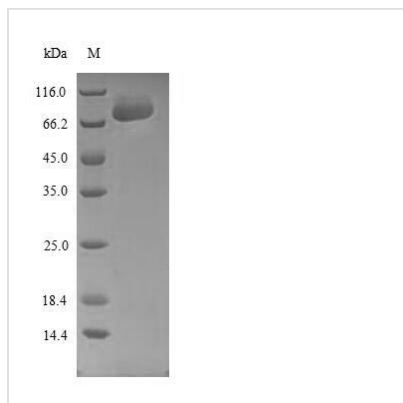


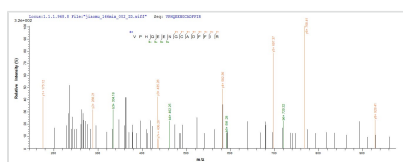


Recombinant Human Sprouty-related, EVH1 domain-containing protein 1 (SPRED1)

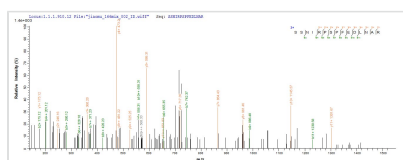
Product Code	CSB-EP773600HU
Relevance	Tyrosine kinase substrate that inhibits growth-factor-mediated activation of MAP kinase. Negatively regulates hematopoiesis of bone marrow
Abbreviation	Recombinant Human SPRED1 protein
Storage	The shelf life is related to many factors, storage state, buffer ingredients, storage temperature and the stability of the protein itself. Generally, the shelf life of liquid form is 6 months at -20°C/-80°C. The shelf life of lyophilized form is 12 months at -20°C/-80°C.
Uniprot No.	Q7Z699
Product Type	Recombinant Protein
Immunogen Species	Homo sapiens (Human)
Purity	Greater than 85% as determined by SDS-PAGE.
Sequence	SEETATSDNDNSYARVRAVVMTRDDSSGGWLPLGGSGLSSVTVFKVPHQEE NGCADFFIRGERLRDKMVVLECMKKDLIYNKVTPTFHHWKIDDKKFGLTFQS PADARAFDRGIRRAIEDISQGCPEKNEAEGADDLQANEEDSSSSLVKDHLFQ QETVVTSEPYRSSNIRPSPFEDLNARRVYMQSQANQITFGQPGLDIQSRSM EY VQRQISKECGSLKSQNRVPLKSIRHVSFQDEDEIVRINPRDILIRRYADYRHPD MWKNDLERDDADSSIQFSKPDSSDYLYSCGDETKLSSPKDSVVFKTQPSS LKIKKSKRRKEDGERSRCVYCQERFNHEENVRGKCQDAPDPIKRCIYQVSCM LCAESMLYHCMSDSEGDFSDPCSCDTSDDKFCLRWLALVALSFIVPCMCCYV PLRMCHRCGEACGCCGGKHKAAG
Research Area	Signal Transduction
Source	E.coli
Target Names	SPRED1
Protein Names	Recommended name: Sprouty-related, EVH1 domain-containing protein 1 Short name= Spred-1 Short name= hSpred1
Expression Region	2-444aa
Notes	Repeated freezing and thawing is not recommended. Store working aliquots at 4°C for up to one week.
Tag Info	N-terminal 10xHis-SUMO-tagged and C-terminal Myc-tagged
Mol. Weight	70.3 kDa
Protein Length	Full Length of Mature Protein
Image	



(Tris-Glycine gel) Discontinuous SDS-PAGE (reduced) with 5% enrichment gel and 15% separation gel.



Based on the SEQUEST from database of E.coli host and target protein, the LC-MS/MS Analysis result of CSB-EP773600HU could indicate that this peptide derived from E.coli-expressed Homo sapiens (Human) SPRED1.



Based on the SEQUEST from database of E.coli host and target protein, the LC-MS/MS Analysis result of CSB-EP773600HU could indicate that this peptide derived from E.coli-expressed Homo sapiens (Human) SPRED1.

Reconstitution

We recommend that this vial be briefly centrifuged prior to opening to bring the contents to the bottom. Please reconstitute protein in deionized sterile water to a concentration of 0.1-1.0 mg/mL. We recommend to add 5-50% of glycerol (final concentration) and aliquot for long-term storage at -20°C/-80°C. Our default final concentration of glycerol is 50%. Customers could use it as reference.

Shelf Life

The shelf life is related to many factors, storage state, buffer ingredients, storage temperature and the stability of the protein itself.

Generally, the shelf life of liquid form is 6 months at -20°C/-80°C. The shelf life of lyophilized form is 12 months at -20°C/-80°C.