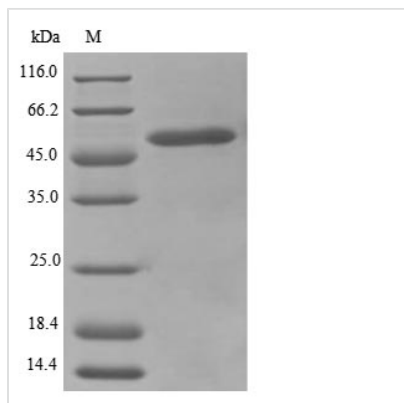




Recombinant Mouse Trifunctional enzyme subunit alpha, mitochondrial (Hadha), partial

Product Code	CSB-EP804834MO
Abbreviation	Recombinant Mouse Hadha protein, partial
Storage	The shelf life is related to many factors, storage state, buffer ingredients, storage temperature and the stability of the protein itself. Generally, the shelf life of liquid form is 6 months at -20°C/-80°C. The shelf life of lyophilized form is 12 months at -20°C/-80°C.
Uniprot No.	Q8BMS1
Product Type	Recombinant Protein
Immunogen Species	Mus musculus (Mouse)
Purity	Greater than $\geq 85\%$ as determined by SDS-PAGE.
Sequence	LCKKNKFGAPQKNVQQLAILGAGLMGAGIAQVSVDKGLKTLKDTT VTGLGRG QQQVFKGLNDKVKKKALTSFERDSIFSNLIGQLDYKGF EKADMVIEAVFEDLGV KHKVLKEVESVTPEHCIFASNTSALPINQIAAVSKRPEK VIGMHYFSPVDKMQLL EIITTDKTSKDTTASAVAVGLRQGKVIIVVKDGP GFYTTTRCLAPMMSEVMRILQE GVDPKKLDALTTGFGFPVGAATLADEVGVDVAQHVAEDLGKAFGERFGGGSV ELLKQMVSKGFLGRKSGKGFYIYQEGSKNKS LNSEMDNILANLRLPAKPEVSS DEDVQYRVITRFVNEAVLCLQEGILATPAEGDIGAVFGLGFPPCLGGPFRFVDL YGAQKVVDRLRKYESAYGTQFTPCQLLLDHANNSSKKFYQ
Research Area	Cancer
Source	E.coli
Target Names	Hadha
Protein Names	Recommended name: Trifunctional enzyme subunit alpha, mitochondrial Alternative name(s): TP-alpha Including the following 2 domains: Long-chain enoyl-CoA hydratase EC= 4.2.1.17 Long chain 3-hydroxyacyl-CoA dehydrogenase EC= 1.1.1
Expression Region	348-763aa
Notes	Repeated freezing and thawing is not recommended. Store working aliquots at 4°C for up to one week.
Tag Info	N-terminal 10xHis-tagged and C-terminal Myc-tagged
Mol. Weight	52.1 kDa
Protein Length	Partial
Image	



(Tris-Glycine gel) Discontinuous SDS-PAGE (reduced) with 5% enrichment gel and 15% separation gel.

Reconstitution

We recommend that this vial be briefly centrifuged prior to opening to bring the contents to the bottom. Please reconstitute protein in deionized sterile water to a concentration of 0.1-1.0 mg/mL. We recommend to add 5-50% of glycerol (final concentration) and aliquot for long-term storage at $-20^{\circ}\text{C}/-80^{\circ}\text{C}$. Our default final concentration of glycerol is 50%. Customers could use it as reference.

Shelf Life

The shelf life is related to many factors, storage state, buffer ingredients, storage temperature and the stability of the protein itself. Generally, the shelf life of liquid form is 6 months at $-20^{\circ}\text{C}/-80^{\circ}\text{C}$. The shelf life of lyophilized form is 12 months at $-20^{\circ}\text{C}/-80^{\circ}\text{C}$.