



# Recombinant Human Extracellular serine/threonine protein kinase FAM20C (FAM20C)

<b>Product Code</b>	CSB-MP816901HU
<b>Relevance</b>	Golgi serine/threonine protein kinase that phosphorylates secretory pathway proteins within Ser-x-Glu/pSer motifs and plays a key role in biomineralization of bones and teeth. Constitutes the main protein kinase for extracellular proteins, generating the majority of the extracellular phosphoproteome. Mainly phosphorylates proteins within the Ser-x-Glu/pSer motif, but also displays a broader substrate specificity. Phosphorylates casein as well as a number of proteins involved in biomineralization such as AMELX, AMTN, ENAM and SPP1. In addition to its role in biomineralization, also plays a role in lipid homeostasis, wound healing and cell migration and adhesion
<b>Abbreviation</b>	Recombinant Human FAM20C protein
<b>Storage</b>	The shelf life is related to many factors, storage state, buffer ingredients, storage temperature and the stability of the protein itself. Generally, the shelf life of liquid form is 6 months at -20°C/-80°C. The shelf life of lyophilized form is 12 months at -20°C/-80°C.
<b>Uniprot No.</b>	Q8IXL6
<b>Storage Buffer</b>	Tris-based buffer,50% glycerol
<b>Product Type</b>	Recombinant Proteins
<b>Immunogen Species</b>	Homo sapiens (Human)
<b>Purity</b>	Greater than 95% as determined by SDS-PAGE. Greater than 95% as determined by SEC-HPLC.
<b>Sequence</b>	DFSSDPSSNLSSHLEKLPPAAEPAERALRGRDPGALRPHDPAHRPLLRLDPG PRRSESPPGGGDASLLARLFEHPLYRVAVPPLTEEDVLFNVNSDTRLSPKAA ENPDWPHAGAEGAFLSPGEEAVDSYPNWLKHFHIGINRYELYSRHNPAIEALL HDLSSQRITSVAMKSGGTQLKLIMTFQNYGQALFKPMKQTREQETPPDFFYFS DYERHNAEIAAFHLDRILDFRRVPPVAGRMVNMTKEIRDVTRDKKLWRTFFISP ANNICFYGECSYYCSTEHALCGKPDQIEGSLAFLPDLSLAKRKTWRNPWRRS YHKRKAWEVDPDYCEEVKQTPPYDSSHRILDVMDMTIFDFLMGNMDRHHY ETFEKFGNETFIIHLDNNGRFGKYSHDELSILVPLQQCCRIRKSTYLRLQLLAKE EYKLSLLMAESLRGDQVAPVLYQPHLEALDRRLRVVLKAVRDCVERNGLHSVV DDDLDEHRAASAR
<b>Research Area</b>	Others
<b>Source</b>	Mammalian cell
<b>Target Names</b>	FAM20C
<b>Protein Names</b>	Dentin matrix protein 4 (DMP-4) (Golgi casein kinase) (Golgi-enriched fraction casein kinase) (GEF-CK) (DMP4)
<b>Expression Region</b>	93-584aa



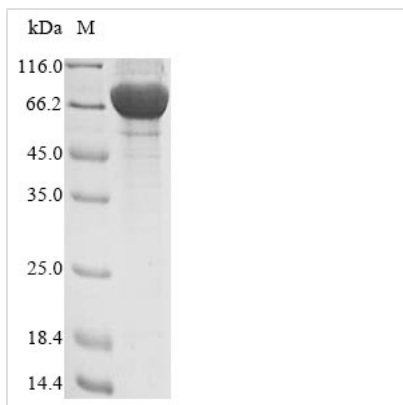
**Notes** Repeated freezing and thawing is not recommended. Store working aliquots at 4°C for up to one week.

**Tag Info** N-terminal 10xHis-tagged and C-terminal Myc-tagged

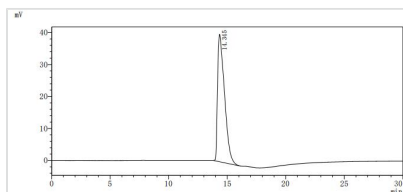
**Mol. Weight** 61.4 kDa

**Protein Length** Full Length of Mature Protein

**Image**



(Tris-Glycine gel) Discontinuous SDS-PAGE (reduced) with 5% enrichment gel and 15% separation gel.



The purity of FAM20C was greater than 95% as determined by SEC-HPLC

**Shelf Life** The shelf life is related to many factors, storage state, buffer ingredients, storage temperature and the stability of the protein itself. Generally, the shelf life of liquid form is 6 months at -20°C/-80°C. The shelf life of lyophilized form is 12 months at -20°C/-80°C.