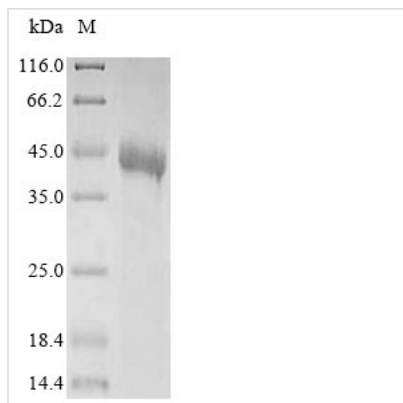




# Recombinant Human Tomoregulin-1 (TMEFF1), partial

<b>Product Code</b>	CSB-EP818263HU
<b>Relevance</b>	May inhibit NODAL and BMP signaling during neural patterning. May be a tumor suppressor in brain cancers.
<b>Abbreviation</b>	Recombinant Human TMEFF1 protein, partial
<b>Storage</b>	The shelf life is related to many factors, storage state, buffer ingredients, storage temperature and the stability of the protein itself. Generally, the shelf life of liquid form is 6 months at -20°C/-80°C. The shelf life of lyophilized form is 12 months at -20°C/-80°C.
<b>Uniprot No.</b>	Q8IYR6
<b>Product Type</b>	Recombinant Protein
<b>Immunogen Species</b>	Homo sapiens (Human)
<b>Purity</b>	Greater than 85% as determined by SDS-PAGE.
<b>Sequence</b>	SNQPPGGGGGGSGGDCPGGKKGKSINCSELNVRESDVRCDESSCKYGGVCK EDGDGLKCACQFQCHTNYIPVCGSNGDTYQNECFLRRAACKHQKEITVIARG PCYSDNGSGSGEGEEEGSGAEVHRKHSKCGPCKYKAECDEDAENVGCVCNI DCSGYSFNPVCASDGSSYNPCFVREASCIKQEQIDIRHLGHCTD TDDTSLLG KKDDGLQYRPDVKDASDQREDVYIGNHMPCPENLNGYCIHGKCEFIYSTQKA SCRCESGYTGQHCEKTD FSILYVVPSRQKLTHV
<b>Research Area</b>	others
<b>Source</b>	E.coli
<b>Target Names</b>	TMEFF1
<b>Protein Names</b>	H7365 Transmembrane protein with EGF-like and one follistatin-like domain C9orf2
<b>Expression Region</b>	40-330aa
<b>Notes</b>	Repeated freezing and thawing is not recommended. Store working aliquots at 4°C for up to one week.
<b>Tag Info</b>	N-terminal 10xHis-tagged and C-terminal Myc-tagged
<b>Mol. Weight</b>	38.5 kDa
<b>Protein Length</b>	Partial
<b>Image</b>	



(Tris-Glycine gel) Discontinuous SDS-PAGE (reduced) with 5% enrichment gel and 15% separation gel.

### Reconstitution

We recommend that this vial be briefly centrifuged prior to opening to bring the contents to the bottom. Please reconstitute protein in deionized sterile water to a concentration of 0.1-1.0 mg/mL. We recommend to add 5-50% of glycerol (final concentration) and aliquot for long-term storage at -20°C/-80°C. Our default final concentration of glycerol is 50%. Customers could use it as reference.

### Shelf Life

The shelf life is related to many factors, storage state, buffer ingredients, storage temperature and the stability of the protein itself. Generally, the shelf life of liquid form is 6 months at -20°C/-80°C. The shelf life of lyophilized form is 12 months at -20°C/-80°C.