

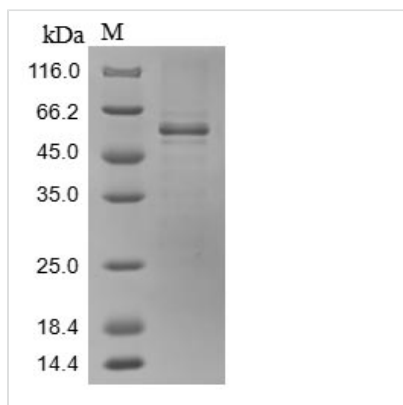


# Recombinant Mouse Sushi repeat-containing protein SRPX2 (SrpX2)

<b>Product Code</b>	CSB-BP819154MO
<b>Relevance</b>	Acts as a ligand for the urokinase plasminogen activator surface receptor. Plays a role in angiogenesis by inducing endothelial cell migration and the formation of vascular network (cords). Involved in cellular migration and adhesion. Increases the phosphorylation levels of FAK. Interacts with and increases the mitogenic activity of HGF. Promotes synapse formation. Required for ultrasonic vocalizations.
<b>Abbreviation</b>	Recombinant Mouse SrpX2 protein
<b>Storage</b>	The shelf life is related to many factors, storage state, buffer ingredients, storage temperature and the stability of the protein itself. Generally, the shelf life of liquid form is 6 months at -20°C/-80°C. The shelf life of lyophilized form is 12 months at -20°C/-80°C.
<b>Uniprot No.</b>	Q8R054
<b>Product Type</b>	Recombinant Protein
<b>Immunogen Species</b>	Mus musculus (Mouse)
<b>Purity</b>	≥ 85% as determined by SDS-PAGE.
<b>Sequence</b>	<p>WYAGSGYSPDESYNEVYAEVPAARARALDYRVPRWCYTLNIQDGEATCYS  RGGNYHSSLGTRCELSCDRGFRLIGRKSQVCLPSRRWSGTAYCRQIRCHTL  FITSGTYTCTNGMLLDSRCDYSCSSGYHLEGDRSRICMEDGRWSGGEPVCVD  IDPPKIRCPHSREKMAEPEKLTARVYWDPPPLVKDSADGTITRVTLRGPEPGSH  FPEGEHVIRYTAIDRAYNRASCKFIVKVQVRRCPILKPPQHGYLTCSSAGDNY  GAICEYHCDGGYERQGTSPSRVCQSSRQWSGTPPVCTPMKINNVNSAAGLL  DQFYEQRLLIVSAPDPSNRYYKMQISMLQQSTCGLDLRHVTIIELVGQPPQEV  GRIREQQLSAGIIEELRQFQRLTRS YFNMVLIDKQGIDRERYMEPVTPPEEIFTFI  DDYLLSNEELARRVEQRDLCE</p>
<b>Research Area</b>	Neuroscience
<b>Source</b>	Baculovirus
<b>Target Names</b>	SrpX2
<b>Protein Names</b>	Recommended name: Sushi repeat-containing protein SRPX2
<b>Expression Region</b>	26-468aa
<b>Notes</b>	Repeated freezing and thawing is not recommended. Store working aliquots at 4°C for up to one week.
<b>Tag Info</b>	N-terminal 10xHis-tagged and C-terminal Myc-tagged
<b>Mol. Weight</b>	54.5 kDa
<b>Protein Length</b>	Full Length of Mature Protein



## Image



(Tris-Glycine gel) Discontinuous SDS-PAGE (reduced) with 5% enrichment gel and 15% separation gel.

## Reconstitution

We recommend that this vial be briefly centrifuged prior to opening to bring the contents to the bottom. Please reconstitute protein in deionized sterile water to a concentration of 0.1-1.0 mg/mL. We recommend to add 5-50% of glycerol (final concentration) and aliquot for long-term storage at -20°C/-80°C. Our default final concentration of glycerol is 50%. Customers could use it as reference.

## Shelf Life

The shelf life is related to many factors, storage state, buffer ingredients, storage temperature and the stability of the protein itself. Generally, the shelf life of liquid form is 6 months at -20°C/-80°C. The shelf life of lyophilized form is 12 months at -20°C/-80°C.