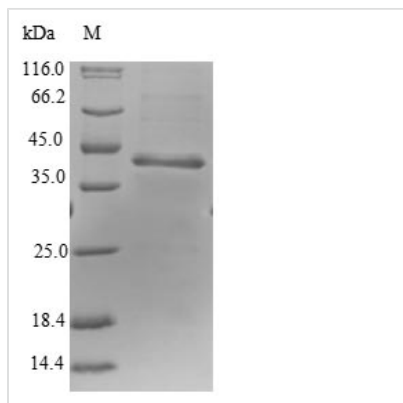




# Recombinant Human Ribonuclease P protein subunit p25-like protein (RPP25L)

<b>Product Code</b>	CSB-EP822707HU
<b>Relevance</b>	May be a component of ribonuclease P or MRP.
<b>Abbreviation</b>	Recombinant Human RPP25L protein
<b>Storage</b>	The shelf life is related to many factors, storage state, buffer ingredients, storage temperature and the stability of the protein itself. Generally, the shelf life of liquid form is 6 months at -20°C/-80°C. The shelf life of lyophilized form is 12 months at -20°C/-80°C.
<b>Uniprot No.</b>	Q8N5L8
<b>Product Type</b>	Recombinant Proteins
<b>Immunogen Species</b>	Homo sapiens (Human)
<b>Purity</b>	Greater than 90% as determined by SDS-PAGE.
<b>Sequence</b>	MEHYRKAGSVELPAPSPMPQLPPDTLEMRVRDGGSKIRNLLGLALGRLEGGSA RHVVFSGSGRAAGKAVSCAEIVKRRVPLHQLTKLRFQTEDSWVPASPDTG LDPLTVRRHVPVAVWLLSRDPLDPNECGYQPPGAPPGLGSMPSSSCGPRSR RRARDTRS
<b>Research Area</b>	Cell Biology
<b>Source</b>	E.coli
<b>Target Names</b>	RPP25L
<b>Protein Names</b>	Recommended name: Alba-like protein C9orf23
<b>Expression Region</b>	1-163aa
<b>Notes</b>	Repeated freezing and thawing is not recommended. Store working aliquots at 4°C for up to one week.
<b>Tag Info</b>	N-terminal GST-tagged
<b>Mol. Weight</b>	44.6kDa
<b>Protein Length</b>	Full Length
<b>Image</b>	



(Tris-Glycine gel) Discontinuous SDS-PAGE (reduced) with 5% enrichment gel and 15% separation gel.

### Shelf Life

The shelf life is related to many factors, storage state, buffer ingredients, storage temperature and the stability of the protein itself.

Generally, the shelf life of liquid form is 6 months at -20°C/-80°C. The shelf life of lyophilized form is 12 months at -20°C/-80°C.