



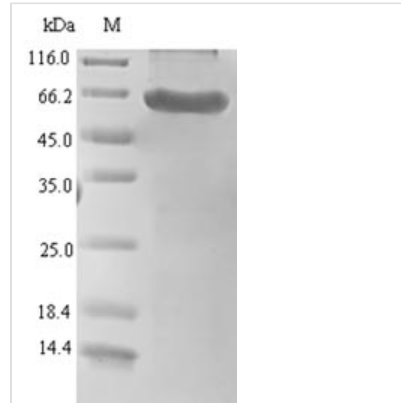
Recombinant Human Serine protease HTRA1 (HTRA1)

Product Code	CSB-EP835695HU
Relevance	Serine protease with a variety of targets, including Extracellular domain matrix proteins such as fibronectin. HTRA1-generated fibronectin fragments further induce synovial cells to up-regulate MMP1 and MMP3 production. May also degrade proteoglycans, such as aggrecan, decorin and fibromodulin. Through cleavage of proteoglycans, may release soluble FGF-glycosaminoglycan complexes that promote the range and intensity of FGF signals in the Extracellular domain space. Regulates the availability of insulin-like growth factors (IGFs) by cleaving IGF-binding proteins. Inhibits signaling mediated by TGF-beta family members. This activity requires the integrity of the catalytic site, although it is unclear whether TGF-beta proteins are themselves degraded. By acting on TGF-beta signaling, may regulate many physiological processes, including retinal angiogenesis and neuronal survival and maturation during development. Intracellularly, degrades TSC2, leading to the activation of TSC2 downstream targets.
Abbreviation	Recombinant Human HTRA1 protein
Storage	The shelf life is related to many factors, storage state, buffer ingredients, storage temperature and the stability of the protein itself. Generally, the shelf life of liquid form is 6 months at -20°C/-80°C. The shelf life of lyophilized form is 12 months at -20°C/-80°C.
Uniprot No.	Q92743
Product Type	Recombinant Proteins
Immunogen Species	Homo sapiens (Human)
Purity	Greater than 90% as determined by SDS-PAGE.
Sequence	QLSRAGRSAPLAAGCPDRCEPARCPPQPEHCEGGRARDACGCCEVCGAPE GAACGLQEGPCGEGQLQCVVDFGVPASATVRRRAQAGLCVCASSEPVCGSDA NTYANLCQLRAASRRSERLHRPPVIVLQRGACGQGQEDPNSLRHKYFNFIADV VEKIAPAVVHIELFRKLPFSKREVPVASGSGFVISEDGLIVTNAHVVTNKHRVKV ELKNGATYEAKIKDVDEKADIALIKIDHQGKLPVLLLGRSSELRPGEFVVAIGSPF SLQNTVTTGIVSTTQRGGKELGLRNSDMYIQTDAIINYGNSGGPLVNLGDGEVI GINTLKVTAGISFAIPSDKIKKFLTESHDRQAKGKAITKKKYIGIRMMSLTSSKAK ELKDRHRDFPDVISGAYIIEVIPDTPAEAGGLKENDVIISINGQSVVSANDVSDVI KRESTLNMVVRGNEIDIMITVIPEEIDP
Research Area	Signal Transduction
Source	E.coli
Target Names	HTRA1
Expression Region	23-480aa
Notes	Repeated freezing and thawing is not recommended. Store working aliquots at



4°C for up to one week.

Tag Info	N-terminal 6xHis-SUMO-tagged
Mol. Weight	62.0 kDa
Protein Length	Full Length of Mature Protein

Image

(Tris-Glycine gel) Discontinuous SDS-PAGE (reduced) with 5% enrichment gel and 15% separation gel.

Shelf Life

The shelf life is related to many factors, storage state, buffer ingredients, storage temperature and the stability of the protein itself.

Generally, the shelf life of liquid form is 6 months at -20°C/-80°C. The shelf life of lyophilized form is 12 months at -20°C/-80°C.