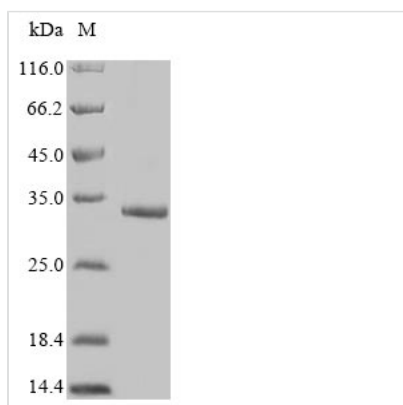




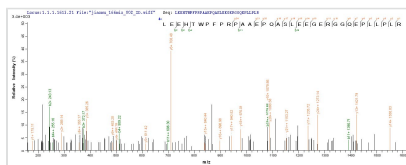
Recombinant Human Protein FAM167A (FAM167A)

Product Code	CSB-MP836244HU
Abbreviation	Recombinant Human FAM167A protein
Storage	The shelf life is related to many factors, storage state, buffer ingredients, storage temperature and the stability of the protein itself. Generally, the shelf life of liquid form is 6 months at -20°C/-80°C. The shelf life of lyophilized form is 12 months at -20°C/-80°C.
Uniprot No.	Q96KS9
Product Type	Recombinant Protein
Immunogen Species	Homo sapiens (Human)
Purity	Greater than 90% as determined by SDS-PAGE.
Sequence	MSVPQIHVEEVGAEEGAGAAAPPDDHLRSLKALTEKLRLETRRPSYLEWQARL EEHTWPFPRPAAEPQASLEEGERGQEPDLLPLREAGQHPPSARSASQGARP LSTGKLEGFQSIDEAIAWLRKELTEMRLQDQQLARQLMRLRGDINKLKIEHTCR LHRRMLNDATYELEERDELADLFCDSPLASSFSLSTPLKLIGVTKMNINSRRFS LC
Research Area	Others
Source	Mammalian cell
Target Names	FAM167A
Protein Names	Recommended name: Protein FAM167A
Expression Region	1-214aa
Notes	Repeated freezing and thawing is not recommended. Store working aliquots at 4°C for up to one week.
Tag Info	N-terminal 10xHis-tagged and C-terminal Myc-tagged
Mol. Weight	28.2kDa
Protein Length	Full Length

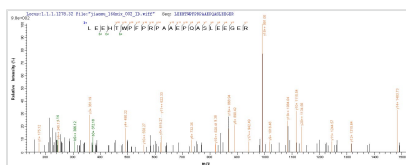
Image



(Tris-Glycine gel) Discontinuous SDS-PAGE (reduced) with 5% enrichment gel and 15% separation gel.



Based on the SEQUEST from database of Mammalian Cell host and target protein, the LC-MS/MS Analysis result of CSB-MP836244HU could indicate that this peptide derived from Mammalian Cell-expressed Homo sapiens (Human) FAM167A.



Based on the SEQUEST from database of Mammalian Cell host and target protein, the LC-MS/MS Analysis result of CSB-MP836244HU could indicate that this peptide derived from Mammalian Cell-expressed Homo sapiens (Human) FAM167A.

Reconstitution

We recommend that this vial be briefly centrifuged prior to opening to bring the contents to the bottom. Please reconstitute protein in deionized sterile water to a concentration of 0.1-1.0 mg/mL. We recommend to add 5-50% of glycerol (final concentration) and aliquot for long-term storage at -20°C/-80°C. Our default final concentration of glycerol is 50%. Customers could use it as reference.

Shelf Life

The shelf life is related to many factors, storage state, buffer ingredients, storage temperature and the stability of the protein itself. Generally, the shelf life of liquid form is 6 months at -20°C/-80°C. The shelf life of lyophilized form is 12 months at -20°C/-80°C.