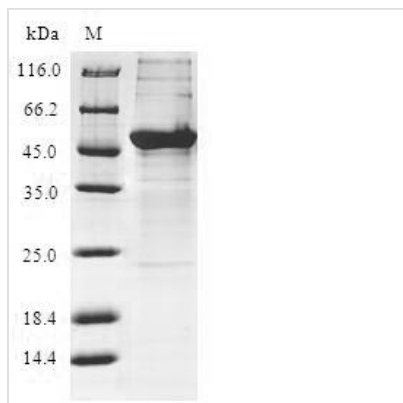




Recombinant Human BTB/POZ domain-containing protein KCTD15 (KCTD15)

Product Code	CSB-EP836301HU
Relevance	During embryonic development, interferes with neural crest formation. Inhibits AP2 transcriptional activity by interaction with its activation domain.
Abbreviation	Recombinant Human KCTD15 protein
Storage	The shelf life is related to many factors, storage state, buffer ingredients, storage temperature and the stability of the protein itself. Generally, the shelf life of liquid form is 6 months at -20°C/-80°C. The shelf life of lyophilized form is 12 months at -20°C/-80°C.
Uniprot No.	Q96S11
Alias	Potassium channel tetramerization domain-containing protein 15
Product Type	Recombinant Protein
Immunogen Species	Homo sapiens (Human)
Purity	≥ 90% as determined by SDS-PAGE.
Sequence	MPHRKERPSSGSSLHTHGSTGTAEGGNMSRSLSLTRSPVSPLAAQGIPLPAQLT KSNAPVHIDVGGHMYTSSLATLTKYPDSTRISRLFNGTEPIVLDSLKQHYFIDRD GEIFRYVLSFLRTSKLLLPDDFKDFSLLYEEARYYQLQPMVRELERWQQEQEQ RRRSRACDCLVVRVTPDLGERIALSGEKALIEEVFPETGDVMCNSVNAGWNQ DPTHVIRFPLNGYCRLNSVQDVL
Research Area	Neuroscience
Source	E.coli
Target Names	KCTD15
Protein Names	Recommended name: BTB/POZ domain-containing protein KCTD15
Expression Region	1-234aa
Notes	Repeated freezing and thawing is not recommended. Store working aliquots at 4°C for up to one week.
Tag Info	N-terminal GST-tagged
Mol. Weight	53.5kDa
Protein Length	Full Length of Isoform 2
Image	



(Tris-Glycine gel) Discontinuous SDS-PAGE (reduced) with 5% enrichment gel and 15% separation gel.

Reconstitution

We recommend that this vial be briefly centrifuged prior to opening to bring the contents to the bottom. Please reconstitute protein in deionized sterile water to a concentration of 0.1-1.0 mg/mL. We recommend to add 5-50% of glycerol (final concentration) and aliquot for long-term storage at -20°C/-80°C. Our default final concentration of glycerol is 50%. Customers could use it as reference.

Shelf Life

The shelf life is related to many factors, storage state, buffer ingredients, storage temperature and the stability of the protein itself. Generally, the shelf life of liquid form is 6 months at -20°C/-80°C. The shelf life of lyophilized form is 12 months at -20°C/-80°C.