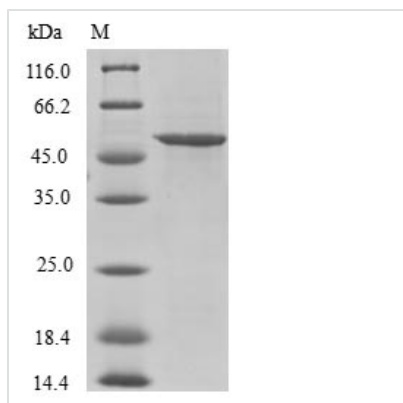




Recombinant Human Splicing factor U2AF 26 kDa subunit (U2AF1L4)

Product Code	CSB-EP837850HU
Relevance	RNA-binding protein that function as a pre-mRNA splicing factor. Plays a critical role in both constitutive and enhancer-dependent splicing by mediating protein-protein interactions and protein-RNA interactions required for accurate 3'-splice site selection. Acts by enhancing the binding of U2AF2 to weak pyrimidine tracts. Also participates in the regulation of alternative pre-mRNA splicing. Activates exon 5 skipping of PTPRC during T-cell activation; an event reversed by GF11. Binds to RNA at the AG dinucleotide at the 3'-splice site. Shows a preference for AGC or AGA
Abbreviation	Recombinant Human U2AF1L4 protein
Storage	The shelf life is related to many factors, storage state, buffer ingredients, storage temperature and the stability of the protein itself. Generally, the shelf life of liquid form is 6 months at -20°C/-80°C. The shelf life of lyophilized form is 12 months at -20°C/-80°C.
Uniprot No.	Q8WU68
Alias	U2 auxiliary factor 26 U2 small nuclear RNA auxiliary factor 1-like protein 4
Product Type	Recombinant Protein
Immunogen Species	Homo sapiens (Human)
Purity	Greater than 90% as determined by SDS-PAGE.
Sequence	MAEYLASIFGTEKDKVNC SFYFKIGVCRHGDRCSRLHNKPTFSQEVFTELQEK YGEIEEMNVCDNLGDHLVGNVYVKFRREEDGERAVAELS NRWFNGQAVHGN VPEVASATSCICGPFPRTSRGSSMGGDPGAGHPRGSILATIPERG TIGVPLITG MAASEALAPLPFTP NRDRCSWQDLSSKPPSLSCPILPRLPGSIM
Research Area	others
Source	E.coli
Target Names	U2AF1L4
Protein Names	Recommended name: Splicing factor U2AF 26 kDa subunit Alternative name(s): U2 auxiliary factor 26 U2 small nuclear RNA auxiliary factor 1-like protein 4 U2(RNU2) small nuclear RNA auxiliary factor 1-like protein 3 Short name= U2 small nuc
Expression Region	1-202aa
Notes	Repeated freezing and thawing is not recommended. Store working aliquots at 4°C for up to one week.
Tag Info	N-terminal GST-tagged
Mol. Weight	49.0kDa

**Protein Length****Full Length of Isoform 2****Image**

(Tris-Glycine gel) Discontinuous SDS-PAGE (reduced) with 5% enrichment gel and 15% separation gel.

Reconstitution

We recommend that this vial be briefly centrifuged prior to opening to bring the contents to the bottom. Please reconstitute protein in deionized sterile water to a concentration of 0.1-1.0 mg/mL. We recommend to add 5-50% of glycerol (final concentration) and aliquot for long-term storage at -20°C/-80°C. Our default final concentration of glycerol is 50%. Customers could use it as reference.

Shelf Life

The shelf life is related to many factors, storage state, buffer ingredients, storage temperature and the stability of the protein itself. Generally, the shelf life of liquid form is 6 months at -20°C/-80°C. The shelf life of lyophilized form is 12 months at -20°C/-80°C.