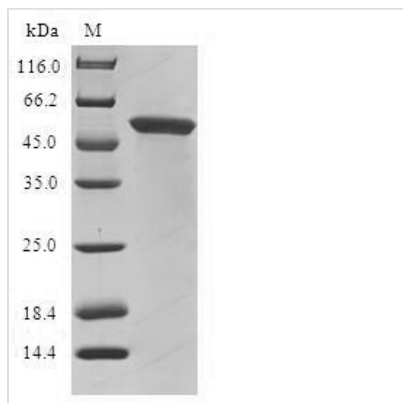




Recombinant Human Glycine N-acyltransferase-like protein 1 (GLYATL1)

Product Code	CSB-EP839276HU
Relevance	Acyl-CoA:glycine N-acyltransferase-like protein 1 Glutamine N-acyltransferase
Abbreviation	Recombinant Human GLYATL1 protein
Storage	The shelf life is related to many factors, storage state, buffer ingredients, storage temperature and the stability of the protein itself. Generally, the shelf life of liquid form is 6 months at -20°C/-80°C. The shelf life of lyophilized form is 12 months at -20°C/-80°C.
Uniprot No.	Q969I3
Alias	Acyltransferase which transfers an acyl group to the N-terminus of glutamine. Can use phenylacetyl-CoA as an acyl donor.
Product Type	Recombinant Protein
Immunogen Species	Homo sapiens (Human)
Purity	≥ 90% as determined by SDS-PAGE.
Sequence	MILLNNSHKLLALYKSLARSIPESLKVYGSVYHINHGPNPFNMEVLVDSWPEYQM VIIRPQKQEMTDDMDSYTNVYRMFSKEPQKSEEVLKNCEIVNWKQRLQIQGLQ ESLGEGIRVATFSKSVKVEHSRALLLVTEDILKLNASSKSKLGSWAETGHPDDE FESETPNFKYAQLDVSYSGLVNDNWKRGNERSLHYIKRCIEDLPAACMLGPE GVPVSWVTMDPSCEVGMAYSMEKYRRTGNMARVMVRYMKYLRQKNIPFYIS VLEENEDSRRFVGQFGFFEASCEWHQWTCYPQNLVPP
Research Area	Signal Transduction
Source	E.coli
Target Names	GLYATL1
Protein Names	Recommended name: Glycine N-acyltransferase-like protein 1 EC= 2.3.1.13 Alternative name(s): Acyl-CoA:glycine N-acyltransferase-like protein 1
Expression Region	1-302aa
Notes	Repeated freezing and thawing is not recommended. Store working aliquots at 4°C for up to one week.
Tag Info	N-terminal GST-tagged
Mol. Weight	62.1kDa
Protein Length	Full Length
Image	



(Tris-Glycine gel) Discontinuous SDS-PAGE (reduced) with 5% enrichment gel and 15% separation gel.

Reconstitution

We recommend that this vial be briefly centrifuged prior to opening to bring the contents to the bottom. Please reconstitute protein in deionized sterile water to a concentration of 0.1-1.0 mg/mL. We recommend to add 5-50% of glycerol (final concentration) and aliquot for long-term storage at $-20^{\circ}\text{C}/-80^{\circ}\text{C}$. Our default final concentration of glycerol is 50%. Customers could use it as reference.

Shelf Life

The shelf life is related to many factors, storage state, buffer ingredients, storage temperature and the stability of the protein itself. Generally, the shelf life of liquid form is 6 months at $-20^{\circ}\text{C}/-80^{\circ}\text{C}$. The shelf life of lyophilized form is 12 months at $-20^{\circ}\text{C}/-80^{\circ}\text{C}$.