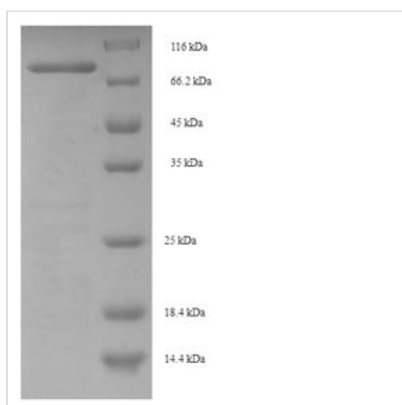




Recombinant Human Centrosomal protein of 63 kDa (CEP63)

Product Code	CSB-EP839376HU
Relevance	Required for normal spindle assembly. Plays a key role in mother-centriole-dependent centriole duplication, through centrosomal recruitment of CEP152. Also recruits CDK1 to centrosomes. Plays a role in DNA damage response. Following DNA damage, such as double-strand breaks (DSBs), is removed from centrosomes; this leads to the inactivation of spindle assembly and delay in mitotic progression.
Abbreviation	Recombinant Human CEP63 protein
Storage	The shelf life is related to many factors, storage state, buffer ingredients, storage temperature and the stability of the protein itself. Generally, the shelf life of liquid form is 6 months at -20°C/-80°C. The shelf life of lyophilized form is 12 months at -20°C/-80°C.
Uniprot No.	Q96MT8
Product Type	Recombinant Protein
Immunogen Species	Homo sapiens (Human)
Purity	≥ 90% as determined by SDS-PAGE.
Sequence	MEALLEGIQNRGHGGGFLTSCEAELQELMKQIDIMVAHKKSEWEGRTHALETC LKIREQELKSLRSQLDVTHKEVGMMLHQQVEEHEKIQEMTMEYKQELKKLHEE LCILKRSYEKLQKKQMREFRGNTKNHREDRSEIERLTAKIEEFRQKSLDWEKQ RLIYQQQVSSLEAQRKALAEQSEIIQAQLVNRKQKLESVELSSQSEIQHLSSKL ERANDTICANELEIERLTMRVNDLVGTSMTVLQEQQQKKEEKLRESEKLLLEALQ EEKRELKAALQSQENLIHEARIQKEKLQEKVKATNTQHAVEAISLESVSATCKQ LSQELMEKYEELKRMEAHNNEYKAEIKKLEQILQGEQSYSSALEGMKMEISH LTQELHQRDITIASTKGSSSDMEKRLRAEMQKAEDKAVEHKEILDQLESCLKLEN RHLSEMVMKLELGLHECPLVSPVPLGSIATRFLEEEELRSHHILERLDAHIEELKR ESEKTVRQFTALK
Research Area	Cell Biology
Source	E.coli
Target Names	CEP63
Expression Region	1-495aa
Notes	Repeated freezing and thawing is not recommended. Store working aliquots at 4°C for up to one week.
Tag Info	N-terminal 6xHis-SUMO-tagged
Mol. Weight	73.9kDa
Protein Length	Full Length of Isoform 3
Image	



(Tris-Glycine gel) Discontinuous SDS-PAGE (reduced) with 5% enrichment gel and 15% separation gel.

Reconstitution

We recommend that this vial be briefly centrifuged prior to opening to bring the contents to the bottom. Please reconstitute protein in deionized sterile water to a concentration of 0.1-1.0 mg/mL. We recommend to add 5-50% of glycerol (final concentration) and aliquot for long-term storage at -20°C/-80°C. Our default final concentration of glycerol is 50%. Customers could use it as reference.

Shelf Life

The shelf life is related to many factors, storage state, buffer ingredients, storage temperature and the stability of the protein itself. Generally, the shelf life of liquid form is 6 months at -20°C/-80°C. The shelf life of lyophilized form is 12 months at -20°C/-80°C.