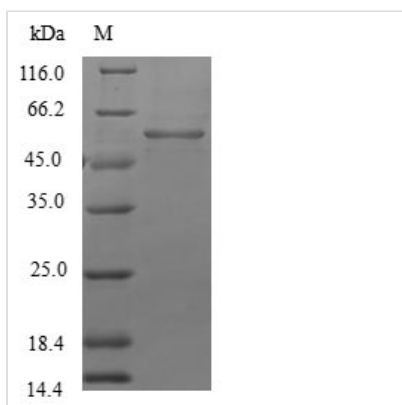




Recombinant Human Beta-1,3-N-acetylglucosaminyltransferase lunatic fringe (LFNG)

Product Code	CSB-EP839868HU
Relevance	Glycosyltransferase that initiates the elongation of O-linked fucose residues attached to EGF-like repeats in the extracellular domain of Notch molecules. Decreases the binding of JAGGED1 to NOTCH2 but not that of DELTA1. Essential mediator of somite segmentation and patterning
Abbreviation	Recombinant Human LFNG protein
Storage	The shelf life is related to many factors, storage state, buffer ingredients, storage temperature and the stability of the protein itself. Generally, the shelf life of liquid form is 6 months at -20°C/-80°C. The shelf life of lyophilized form is 12 months at -20°C/-80°C.
Uniprot No.	Q8NES3
Alias	O-fucosylpeptide 3-beta-N-acetylglucosaminyltransferase
Product Type	Recombinant Protein
Immunogen Species	Homo sapiens (Human)
Purity	Greater than 90% as determined by SDS-PAGE.
Sequence	MTPGRCCLAADIQVETFIFTDGEDEALARHTGNVVITNCSSAAHSRQALSCKMA VEYDRFIESGRKWFCHVDDDDNYVNLRALLRLLASYPHTRDVYVGKPSLDRPIQ AMERVSENKVRPVHFWFATGGAGFCISRGLALKMSPWASGGHFMNTAERIRL PDDCTIGYIVEALLGVPLIRSGLFHSHLENLQQVPTSELHEQVTLISYGMFENKR NAVHVKGPFVSVEADPSRFRSIHCHLYPDTPWCPRTAIF
Research Area	Neuroscience
Source	E.coli
Target Names	LFNG
Protein Names	Recommended name: Beta-1,3-N-acetylglucosaminyltransferase lunatic fringe EC= 2.4.1.222Alternative name(s): O-fucosylpeptide 3-beta-N-acetylglucosaminyltransferase
Expression Region	1-250aa
Notes	Repeated freezing and thawing is not recommended. Store working aliquots at 4°C for up to one week.
Tag Info	N-terminal GST-tagged
Mol. Weight	55.2kDa
Protein Length	Full Length of Isoform 2
Image	



(Tris-Glycine gel) Discontinuous SDS-PAGE (reduced) with 5% enrichment gel and 15% separation gel.

Reconstitution

We recommend that this vial be briefly centrifuged prior to opening to bring the contents to the bottom. Please reconstitute protein in deionized sterile water to a concentration of 0.1-1.0 mg/mL. We recommend to add 5-50% of glycerol (final concentration) and aliquot for long-term storage at -20°C/-80°C. Our default final concentration of glycerol is 50%. Customers could use it as reference.

Shelf Life

The shelf life is related to many factors, storage state, buffer ingredients, storage temperature and the stability of the protein itself. Generally, the shelf life of liquid form is 6 months at -20°C/-80°C. The shelf life of lyophilized form is 12 months at -20°C/-80°C.