



Recombinant Mouse Lysosomal phospholipase A and acyltransferase (Pla2g15)

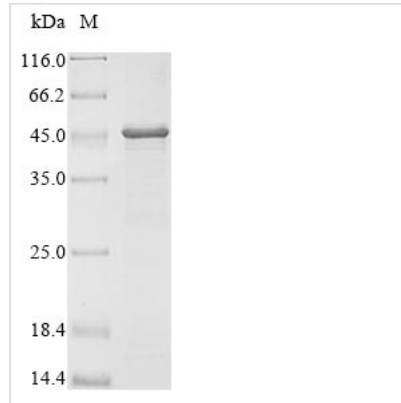
Product Code	CSB-EP840854MO
Relevance	Has transacylase and calcium-independent phospholipase A2 activity. Catalyzes the formation of 1-O-acyl-N-acetylsphingosine and the concomitant release of a lyso-phospholipid. Has high activity with 1-palmitoyl-2-oleoyl-sn-glycero-3-phosphocholine (POPC) and 1,2-dioleoyl-sn-glycero-3-phosphocholine (DOPC), catalyzing the transfer of oleic acid to N-acetyl-sphingosine. Required for normal phospholipid degradation in alveolar and peritoneal macrophages and in spleen
Abbreviation	Recombinant Mouse Pla2g15 protein
Storage	The shelf life is related to many factors, storage state, buffer ingredients, storage temperature and the stability of the protein itself. Generally, the shelf life of liquid form is 6 months at -20°C/-80°C. The shelf life of lyophilized form is 12 months at -20°C/-80°C.
Uniprot No.	Q8VEB4
Storage Buffer	Tris-based buffer,50% glycerol
Product Type	Recombinant Proteins
Immunogen Species	Mus musculus (Mouse)
Purity	Greater than 85% as determined by SDS-PAGE.
Sequence	AQRHPPVVLVPGDLGNQLEAKLDKPKVVHYLCSKKTDSYFTLWLNLELLLPVII DCWIDNIRLVYNRTSRATQFPDGVDRVPGFGETFSMEFLDPSKRNVGSYFY TMVESLVGWGYTRGEDVRGAPYDWRRAPNENGPYFLALREMIEMYQMYG GPVVLVAHSMGNVYMLYFLQRQPQVWKDKYIHAFVSLGAPWGGVAKTLRVLA SGDNNRIPVIGPLKIREQQRSVSTSWLLPYNHTWSHEKVFVYTPPTNYTLRD YHRFFRDIGFEDGWFMQRDTEGLVEAMTPPGVELHCLYGTGVPTPNSFYYES FPDRDPKICFGDGDGTVNLESVLQCQAWQSRQEHRVSLQELPGSEHIEMLAN ATTLAYLKRVLLEP
Research Area	Epigenetics and Nuclear Signaling
Source	E.coli
Target Names	Pla2g15
Protein Names	1-O-acylceramide synthase1 Short name:ACSLCAT-like lysophospholipase Short name:LLPLLysophospholipase 3Lysosomal phospholipase A22 Short name:LPLA2
Expression Region	34-412aa
Notes	Repeated freezing and thawing is not recommended. Store working aliquots at 4°C for up to one week.
Tag Info	N-terminal 10xHis-tagged and C-terminal Myc-tagged


Mol. Weight

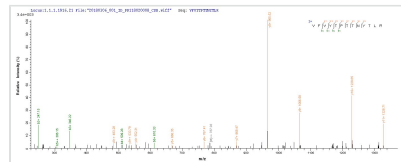
50.5 kDa

Protein Length

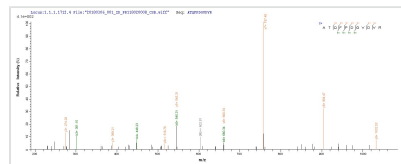
Full Length of Mature Protein

Image


(Tris-Glycine gel) Discontinuous SDS-PAGE (reduced) with 5% enrichment gel and 15% separation gel.



Based on the SEQUEST from database of E.coli host and target protein, the LC-MS/MS Analysis result of CSB-EP840854MO could indicate that this peptide derived from E.coli-expressed Mus musculus (Mouse) Pla2g15.



Based on the SEQUEST from database of E.coli host and target protein, the LC-MS/MS Analysis result of CSB-EP840854MO could indicate that this peptide derived from E.coli-expressed Mus musculus (Mouse) Pla2g15.

Shelf Life

The shelf life is related to many factors, storage state, buffer ingredients, storage temperature and the stability of the protein itself.

Generally, the shelf life of liquid form is 6 months at -20°C/-80°C. The shelf life of lyophilized form is 12 months at -20°C/-80°C.