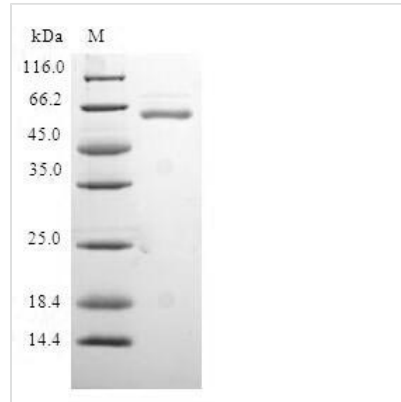




# Recombinant Human Protein quaking (QKI)

<b>Product Code</b>	CSB-EP842739HU
<b>Relevance</b>	RNA-binding protein that plays a central role in myelination. Binds to the 5'-NACUAAAY-N(1,20)-UAAY-3' RNA core sequence. Regulates target mRNA stability. In addition, acts by regulating pre-mRNA splicing, mRNA export and protein translation. Required to protect and promote stability of mRNAs such as MBP and CDKN1B. Regulator of oligodendrocyte differentiation and maturation in the brain that may play a role in myelin and oligodendrocyte dysfunction in schizophrenia. Participates in mRNA transport by regulating the nuclear export of MBP mRNA. Also involved in regulation of mRNA splicing of MAG pre-mRNA. Acts as a translational repressor .
<b>Abbreviation</b>	Recombinant Human QKI protein
<b>Storage</b>	The shelf life is related to many factors, storage state, buffer ingredients, storage temperature and the stability of the protein itself. Generally, the shelf life of liquid form is 6 months at -20°C/-80°C. The shelf life of lyophilized form is 12 months at -20°C/-80°C.
<b>Uniprot No.</b>	Q96PU8
<b>Product Type</b>	Recombinant Protein
<b>Immunogen Species</b>	Homo sapiens (Human)
<b>Purity</b>	≥ 90% as determined by SDS-PAGE.
<b>Sequence</b>	MVGEMETKEKPKPTPDYLMQLMNDKKLMSSLPNFCGIFNHLERLLDEEISRVR KDMYNDTLNGSTEKRSALPDAVGPIVQLQEKLVPVKEYPDFNFVGRILGPR GLTAKQLEAETGCKIMVRGKGSMDKKKEEQNRGKPNWEHLNEDLHVLITVE DAQNRAEIKLKRAVEEVKLLVPAEGEDSLKMKQLMELAILNGTYRDANIKSP ALAFSLAATAQAAPRIITGPAPVLPAAALRTPPTAGPTIMPLIRQIQTAVMPNGT PHPTAAIVPPGPEAGLIYTPYEYPYTLAPATSILEYPIEPSGVLGAVATKVRHD MRVHPYQRIVTADRAATGN
<b>Research Area</b>	Neuroscience
<b>Source</b>	E.coli
<b>Target Names</b>	QKI
<b>Protein Names</b>	Recommended name: Protein quaking Short name= Hqk Short name= Hqkl
<b>Expression Region</b>	1-341aa
<b>Notes</b>	Repeated freezing and thawing is not recommended. Store working aliquots at 4°C for up to one week.
<b>Tag Info</b>	N-terminal GST-tagged
<b>Mol. Weight</b>	64.7kDa
<b>Protein Length</b>	Full Length
<b>Image</b>	



(Tris-Glycine gel) Discontinuous SDS-PAGE (reduced) with 5% enrichment gel and 15% separation gel.

### Reconstitution

We recommend that this vial be briefly centrifuged prior to opening to bring the contents to the bottom. Please reconstitute protein in deionized sterile water to a concentration of 0.1-1.0 mg/mL. We recommend to add 5-50% of glycerol (final concentration) and aliquot for long-term storage at  $-20^{\circ}\text{C}/-80^{\circ}\text{C}$ . Our default final concentration of glycerol is 50%. Customers could use it as reference.

### Shelf Life

The shelf life is related to many factors, storage state, buffer ingredients, storage temperature and the stability of the protein itself. Generally, the shelf life of liquid form is 6 months at  $-20^{\circ}\text{C}/-80^{\circ}\text{C}$ . The shelf life of lyophilized form is 12 months at  $-20^{\circ}\text{C}/-80^{\circ}\text{C}$ .