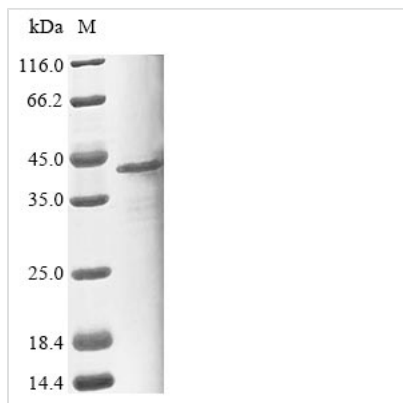




Recombinant Human Pleckstrin homology domain-containing family F member 1 (PLEKHF1)

| | |
|--------------------------|---|
| Product Code | CSB-BP842759HU |
| Abbreviation | Recombinant Human PLEKHF1 protein |
| Storage | The shelf life is related to many factors, storage state, buffer ingredients, storage temperature and the stability of the protein itself. Generally, the shelf life of liquid form is 6 months at -20°C/-80°C. The shelf life of lyophilized form is 12 months at -20°C/-80°C. |
| Uniprot No. | Q96S99 |
| Product Type | Recombinant Protein |
| Immunogen Species | Homo sapiens (Human) |
| Purity | ≥ 85% as determined by SDS-PAGE. |
| Sequence | MVDHLANTEINSQRIA AVESCFGASGQPLALPGRVLLGEGVLTKECRKKAKPRI FFLFNDILVYGSIVLNKRKYRSQHIIPLEEVTLLELLPETLQAKNRWMIKTAKKSFV VSAASATERQEWISHIEECVRRQLRATGRPPSTEHAAAPWIPDKATDICMRCTQ TRFSALTRRHCRKCGFVVCAECRQRFLLPRLSPKPVRVCSLCYRELAAQQ RQEEAEEQGAGSPGQPAHLARPICGASSGDDDDSDDEDKEGSRDGDWPSSV EFYASGVAWSAFHS |
| Research Area | Others |
| Source | Baculovirus |
| Target Names | PLEKHF1 |
| Protein Names | Recommended name: Pleckstrin homology domain-containing family F member 1 Short name= PH domain-containing family F member 1 Alternative name(s): Lysosome-associated apoptosis-inducing protein containing PH and FYVE domains Short name= |
| Expression Region | 1-279aa |
| Notes | Repeated freezing and thawing is not recommended. Store working aliquots at 4°C for up to one week. |
| Tag Info | N-terminal 10xHis-tagged and C-terminal Myc-tagged |
| Mol. Weight | 35.2 kDa |
| Protein Length | Full Length |
| Image | |



(Tris-Glycine gel) Discontinuous SDS-PAGE (reduced) with 5% enrichment gel and 15% separation gel.

Reconstitution

We recommend that this vial be briefly centrifuged prior to opening to bring the contents to the bottom. Please reconstitute protein in deionized sterile water to a concentration of 0.1-1.0 mg/mL. We recommend to add 5-50% of glycerol (final concentration) and aliquot for long-term storage at $-20^{\circ}\text{C}/-80^{\circ}\text{C}$. Our default final concentration of glycerol is 50%. Customers could use it as reference.

Shelf Life

The shelf life is related to many factors, storage state, buffer ingredients, storage temperature and the stability of the protein itself. Generally, the shelf life of liquid form is 6 months at $-20^{\circ}\text{C}/-80^{\circ}\text{C}$. The shelf life of lyophilized form is 12 months at $-20^{\circ}\text{C}/-80^{\circ}\text{C}$.