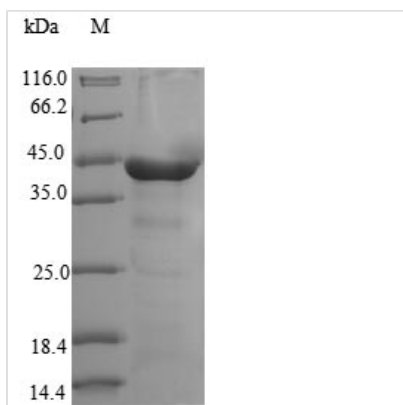




# Recombinant Human Cytoplasmic dynein 2 light intermediate chain 1 (DYNC2LI1)

<b>Product Code</b>	CSB-EP844722HU
<b>Relevance</b>	May function as a motor for intraflagellar retrograde transport. Functions in cilia biogenesis (By similarity).
<b>Abbreviation</b>	Recombinant Human DYNC2LI1 protein
<b>Storage</b>	The shelf life is related to many factors, storage state, buffer ingredients, storage temperature and the stability of the protein itself. Generally, the shelf life of liquid form is 6 months at -20°C/-80°C. The shelf life of lyophilized form is 12 months at -20°C/-80°C.
<b>Uniprot No.</b>	Q8TCX1
<b>Product Type</b>	Recombinant Protein
<b>Immunogen Species</b>	Homo sapiens (Human)
<b>Purity</b>	≥ 90% as determined by SDS-PAGE.
<b>Sequence</b>	MPSETLWEIAKAEVEKRGINGSEGDAEIAEKVFFFIGSKNGGKTTIILRCLDRD EPPKPTLALEYTYGRRRAKGHNTPKDIAHFWE LGGGTSLDLISIPITGDTLRFTS LVLVLDLSKPNDLWPTMENLLQATKSHVDK VIMKLGKTNAKAVSEM RQKIWNN MPKDHPQDHELIDPPVPLVIIGSKYDVFQDFESEKRKVICKTLRFVAHYYGAS LMFTSKSEALLLKIRGVINQLAFGIDKSKSICVDQNKPLFITAGLDSFGQIGSPPV PENDIGKLHAHSPMELWKKVYEKLFPPKSINTLKDIDPARDPQYAENEVDEM RIQKDLELEQYKRSSSKSWKQIELD S
<b>Research Area</b>	Signal Transduction
<b>Source</b>	E.coli
<b>Target Names</b>	DYNC2LI1
<b>Protein Names</b>	Recommended name: Cytoplasmic dynein 2 light intermediate chain 1 Short name= Dynein 2 light intermediate chain
<b>Expression Region</b>	1-352aa
<b>Notes</b>	Repeated freezing and thawing is not recommended. Store working aliquots at 4°C for up to one week.
<b>Tag Info</b>	N-terminal 10xHis-tagged and C-terminal Myc-tagged
<b>Mol. Weight</b>	44.8kDa
<b>Protein Length</b>	Full Length of Isoform 2
<b>Image</b>	



(Tris-Glycine gel) Discontinuous SDS-PAGE (reduced) with 5% enrichment gel and 15% separation gel.

### Reconstitution

We recommend that this vial be briefly centrifuged prior to opening to bring the contents to the bottom. Please reconstitute protein in deionized sterile water to a concentration of 0.1-1.0 mg/mL. We recommend to add 5-50% of glycerol (final concentration) and aliquot for long-term storage at -20°C/-80°C. Our default final concentration of glycerol is 50%. Customers could use it as reference.

### Shelf Life

The shelf life is related to many factors, storage state, buffer ingredients, storage temperature and the stability of the protein itself. Generally, the shelf life of liquid form is 6 months at -20°C/-80°C. The shelf life of lyophilized form is 12 months at -20°C/-80°C.