

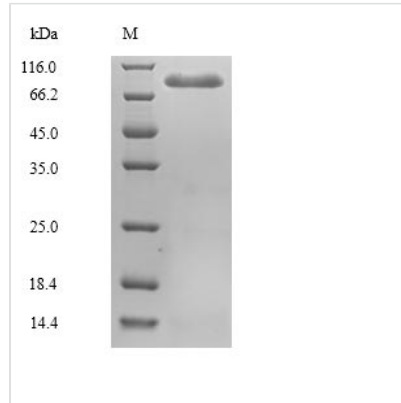


# Recombinant Mouse Mannan-binding lectin serine protease 2 (Masp2)

<b>Product Code</b>	CSB-BP856307MO
<b>Relevance</b>	Serum protease that plays an important role in the activation of the complement system via mannose-binding lectin. After activation by auto-catalytic cleavage it cleaves C2 and C4, leading to their activation and to the formation of C3 convertase (By similarity).
<b>Abbreviation</b>	Recombinant Mouse Masp2 protein
<b>Storage</b>	The shelf life is related to many factors, storage state, buffer ingredients, storage temperature and the stability of the protein itself. Generally, the shelf life of liquid form is 6 months at -20°C/-80°C. The shelf life of lyophilized form is 12 months at -20°C/-80°C.
<b>Uniprot No.</b>	Q91WP0
<b>Product Type</b>	Recombinant Proteins
<b>Immunogen Species</b>	Mus musculus (Mouse)
<b>Purity</b>	Greater than 90% as determined by SDS-PAGE.
<b>Sequence</b>	SKWPEPVFGRLVSPGFPEKYADHQDRSWTLTAPPGYRLRLYFTHFDLELSYR CEYDFVKLSSGTKVLATLCGQESTDTEQAPGNDTFYSLGPSLKVTFHSDYSNE KPFTGFEEAFYAAEDVDECRVSLGDSVPCDHYCHNYLGGYYCSCRAGYVLHQ NKHTCSALCSGQVFTGRSGYLSSPEYPQYPKLSSCTYSIRLEDGFSVILDFVE SFDVETHPEAQCPYDSLKIQTDKGEHGPFCKGKTLPPRIETDSHKVTITFATDES GNHTGWKIHYTSTARPCPDPTAPPNGSISPVQAIYVLKDRFSVFCCKTFELLQ GSVPLKSFTAVCQKDGSDWRPMPECSIIDCGPPDDLPHGHVDYITGPEVTTYK AVIQYSCEETFYTMSSNGKYVCEADGFWTSSKGEKLPVCEPVCGLSTHTIGG RIVGGQPAKPGDFPWQVLLLGQTTAAAGALIHNDNWVLTAAHAVYEKRMAASS LNIRMGILKRLSPHYTQAWPEEIFIHEGYTHGAGFDNDIALIKLKNKVTINGSIMP VCLPRKEAASLMRTDFTGTVAGWGLTQKGLLARNLMFVDIPIADHQKCTAVYE KLYPGVRVSNMLCAGLETGGKDSRCRGGALVFLDNETQRWFVGGIVSW GSINCGAADQYGVYTKVINIYIPWIENIISNF
<b>Research Area</b>	Cardiovascular
<b>Source</b>	Baculovirus
<b>Target Names</b>	Masp2
<b>Protein Names</b>	Recommended name: Mannan-binding lectin serine protease 2 EC= 3.4.21.104 Alternative name(s): MBL-associated serine protease 2 Mannose-binding protein-associated serine protease 2 Short name= MASP-2 Cleaved into the following 2 c
<b>Expression Region</b>	20-685aa
<b>Notes</b>	Repeated freezing and thawing is not recommended. Store working aliquots at 4°C for up to one week.



<b>Tag Info</b>	N-terminal 6xHis-tagged
<b>Mol. Weight</b>	75.4kDa
<b>Protein Length</b>	Full Length of Mature Protein

**Image**

(Tris-Glycine gel) Discontinuous SDS-PAGE (reduced) with 5% enrichment gel and 15% separation gel.

**Shelf Life**

The shelf life is related to many factors, storage state, buffer ingredients, storage temperature and the stability of the protein itself. Generally, the shelf life of liquid form is 6 months at -20°C/-80°C. The shelf life of lyophilized form is 12 months at -20°C/-80°C.