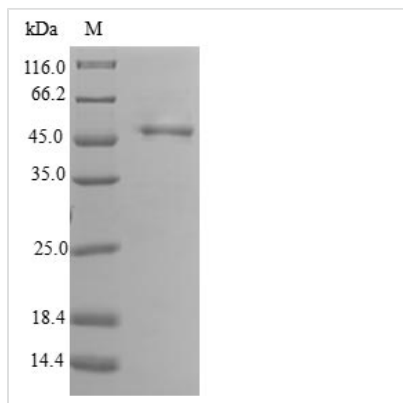




Recombinant Human Calcineurin subunit B type 2 (PPP3R2)

Product Code	CSB-EP856978HU
Relevance	Regulatory subunit of calcineurin, a calcium-dependent, calmodulin stimulated protein phosphatase. Confers calcium sensitivity
Abbreviation	Recombinant Human PPP3R2 protein
Storage	The shelf life is related to many factors, storage state, buffer ingredients, storage temperature and the stability of the protein itself. Generally, the shelf life of liquid form is 6 months at -20°C/-80°C. The shelf life of lyophilized form is 12 months at -20°C/-80°C.
Uniprot No.	Q96LZ3
Alias	Calcineurin B-like protein
Product Type	Recombinant Protein
Immunogen Species	Homo sapiens (Human)
Purity	≥ 90% as determined by SDS-PAGE.
Sequence	GNEASYPAEMCSEHFDNDEIKRLGRRFKKLDLKDSESLVVEEFMSLPELRHNPL VRRVIDVFDTDGDGEVDFKEFILGTSQFSVKGDEEQKLRFAFSIYDMDKDG YISNGELFQVLKMMVGNLTDWQLQQLVDKTIILDKDGDGKISFEFSAVVRDLEI HKKLVLIV
Research Area	Signal Transduction
Source	E.coli
Target Names	PPP3R2
Protein Names	Recommended name: Calcineurin subunit B type 2 Alternative name(s): Calcineurin B-like protein Short name= CBLP Calcineurin BII Short name= CNBII PPP3R1-like Protein phosphatase 2B regulatory subunit 2 Protein phosphatase 2B regulatory subunit 2
Expression Region	1-170aa
Notes	Repeated freezing and thawing is not recommended. Store working aliquots at 4°C for up to one week.
Tag Info	N-terminal GST-tagged
Mol. Weight	46.4kDa
Protein Length	Full Length
Image	



(Tris-Glycine gel) Discontinuous SDS-PAGE (reduced) with 5% enrichment gel and 15% separation gel.

Reconstitution

We recommend that this vial be briefly centrifuged prior to opening to bring the contents to the bottom. Please reconstitute protein in deionized sterile water to a concentration of 0.1-1.0 mg/mL. We recommend to add 5-50% of glycerol (final concentration) and aliquot for long-term storage at -20°C/-80°C. Our default final concentration of glycerol is 50%. Customers could use it as reference.

Shelf Life

The shelf life is related to many factors, storage state, buffer ingredients, storage temperature and the stability of the protein itself. Generally, the shelf life of liquid form is 6 months at -20°C/-80°C. The shelf life of lyophilized form is 12 months at -20°C/-80°C.