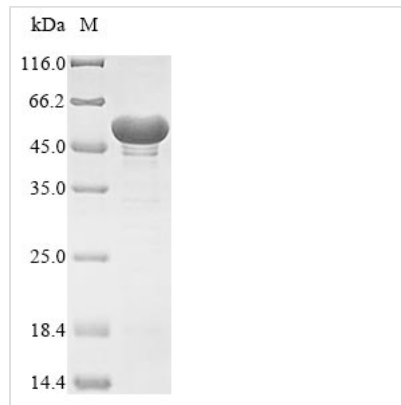


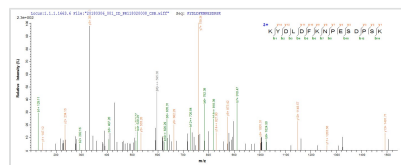


Recombinant *Neosartorya fumigata* Enolase (enoA)

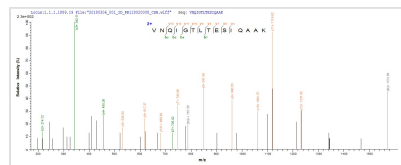
Product Code	CSB-EP857046NGS
Abbreviation	Recombinant <i>Neosartorya fumigata</i> enoA protein
Storage	The shelf life is related to many factors, storage state, buffer ingredients, storage temperature and the stability of the protein itself. Generally, the shelf life of liquid form is 6 months at -20°C/-80°C. The shelf life of lyophilized form is 12 months at -20°C/-80°C.
Uniprot No.	Q96X30
Product Type	Recombinant Protein
Immunogen Species	<i>Neosartorya fumigata</i> (strain ATCC MYA-4609 / Af293 / CBS 101355 / FGSC A1100) (<i>Aspergillus fumigatus</i>)
Purity	≥ 85% as determined by SDS-PAGE.
Sequence	PISKIHARSVYDSRGNPTVEVDVVTETGLHRAIVPSGASTGQHEAHEL RDGDK TQWGGKGV LKAVKNVNETIGPALIKENIDVKDQSKVDEFLNKL DGTANKSNLG ANAILGVSLAVAKAGAAEKGVPLYAHISDLAGTKKPYVLPVPFQNV LN GGSHA GGRLAFQEFMIVPDSAPSFSEALRQGAEVYQKLKALAKKKY GQSAGNVGDEG GVAPDIQTAEALDLITEAIEQAGYTGKIKIAMDVASSEFYKADVKKYDLDFKNP ESDPSKWLTYEQLADLYKSLAAKYPIVSIEDPFAEDDWEAWSYFYKTSDFQIV GDDLTVTNPGRIKKAIELKSCNALLLKV NQIGTLTESIQAAKDSYADN WGVMVS HRSGETEDVTIADIAVGLRSGQIKTGAPCRSERLAKLNQILRIEEELGENAVYAG SKFRTAVNL
Research Area	Others
Source	<i>E. coli</i>
Target Names	enoA
Protein Names	2-phospho-D-glycerate hydro-lyase 2-phosphoglycerate dehydratase Allergen: Asp f 22
Expression Region	2-438aa
Notes	Repeated freezing and thawing is not recommended. Store working aliquots at 4°C for up to one week.
Tag Info	N-terminal 6xHis-tagged
Mol. Weight	51.2 kDa
Protein Length	Full Length of Mature Protein
Image	



(Tris-Glycine gel) Discontinuous SDS-PAGE (reduced) with 5% enrichment gel and 15% separation gel.



Based on the SEQUEST from database of E.coli host and target protein, the LC-MS/MS Analysis result of CSB-EP857046NGS could indicate that this peptide derived from E.coli-expressed *Neosartorya fumigata* (strain ATCC MYA-4609 / Af293 / CBS 101355 / FGSC A1100) (*Aspergillus fumigatus*) enoA.



Based on the SEQUEST from database of E.coli host and target protein, the LC-MS/MS Analysis result of CSB-EP857046NGS could indicate that this peptide derived from E.coli-expressed *Neosartorya fumigata* (strain ATCC MYA-4609 / Af293 / CBS 101355 / FGSC A1100) (*Aspergillus fumigatus*) enoA.

Reconstitution

We recommend that this vial be briefly centrifuged prior to opening to bring the contents to the bottom. Please reconstitute protein in deionized sterile water to a concentration of 0.1-1.0 mg/mL. We recommend to add 5-50% of glycerol (final concentration) and aliquot for long-term storage at -20°C/-80°C. Our default final concentration of glycerol is 50%. Customers could use it as reference.

Shelf Life

The shelf life is related to many factors, storage state, buffer ingredients, storage temperature and the stability of the protein itself.

Generally, the shelf life of liquid form is 6 months at -20°C/-80°C. The shelf life of lyophilized form is 12 months at -20°C/-80°C.