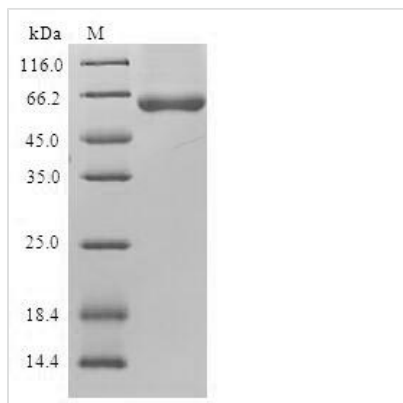




# Recombinant Human Gamma-soluble NSF attachment protein (NAPG)

<b>Product Code</b>	CSB-EP860352HU
<b>Relevance</b>	Required for vesicular transport between the endoplasmic reticulum and the Golgi apparatus.
<b>Abbreviation</b>	Recombinant Human NAPG protein
<b>Storage</b>	The shelf life is related to many factors, storage state, buffer ingredients, storage temperature and the stability of the protein itself. Generally, the shelf life of liquid form is 6 months at -20°C/-80°C. The shelf life of lyophilized form is 12 months at -20°C/-80°C.
<b>Uniprot No.</b>	Q99747
<b>Alias</b>	N-ethylmaleimide-sensitive factor attachment protein gamma
<b>Product Type</b>	Recombinant Protein
<b>Immunogen Species</b>	Homo sapiens (Human)
<b>Purity</b>	≥ 90% as determined by SDS-PAGE.
<b>Sequence</b>	MAAQKINEGLEHLAKAEKYLKTGFLKWKPDYDSAASEYGKAAVAFKNAKQFE QAKDAACLREAVAHENNRALFHAAKAYEQAGMMLKEMQKLPEAVQLIEKASMM YLENGTPDTAAMALERAGKLIENVDPKAVQLYQQQTANVFENDERLRQAVELL GKASRLLVRGRRFDEAALSISIQKEKNYKEIENYPTCYKKTIAQVLVHLHRNDYVA AERCVRESYSIPGFNGSEDCAALEQLLEGYDQQDQDQVSDVCNSPLFKYMDN DYAKLGLSLVVPGGGIKKKSPATPQAKPDGVTATAADEEEDEYSGGLC
<b>Research Area</b>	Neuroscience
<b>Source</b>	E.coli
<b>Target Names</b>	NAPG
<b>Protein Names</b>	Recommended name: Gamma-soluble NSF attachment protein Short name= SNAP-gamma Alternative name(s): N-ethylmaleimide-sensitive factor attachment protein gamma
<b>Expression Region</b>	1-312aa
<b>Notes</b>	Repeated freezing and thawing is not recommended. Store working aliquots at 4°C for up to one week.
<b>Tag Info</b>	N-terminal GST-tagged
<b>Mol. Weight</b>	61.7kDa
<b>Protein Length</b>	Full Length of BC001889
<b>Image</b>	



(Tris-Glycine gel) Discontinuous SDS-PAGE (reduced) with 5% enrichment gel and 15% separation gel.

### Reconstitution

We recommend that this vial be briefly centrifuged prior to opening to bring the contents to the bottom. Please reconstitute protein in deionized sterile water to a concentration of 0.1-1.0 mg/mL. We recommend to add 5-50% of glycerol (final concentration) and aliquot for long-term storage at -20°C/-80°C. Our default final concentration of glycerol is 50%. Customers could use it as reference.

### Shelf Life

The shelf life is related to many factors, storage state, buffer ingredients, storage temperature and the stability of the protein itself. Generally, the shelf life of liquid form is 6 months at -20°C/-80°C. The shelf life of lyophilized form is 12 months at -20°C/-80°C.