

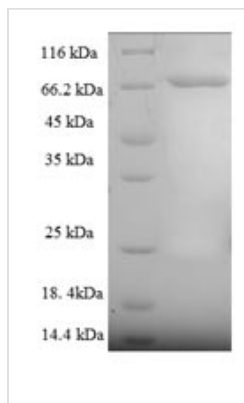


# Recombinant Human Cytoplasmic domain polyadenylation element-binding protein 1 (CPEB1)

<b>Product Code</b>	CSB-EP861184HU
<b>Relevance</b>	Sequence-specific RNA-binding protein that regulates mRNA Cytoplasmic domain polyadenylation and translation initiation during oocyte maturation, early development and at postsynapse sites of neurons. Binds to the Cytoplasmic domain polyadenylation element (CPE), an uridine-rich sequence element (consensus sequence 5'-UUUUUAU-3') within the mRNA 3'-UTR. In absence of phosphorylation and in association with TACC3 is also involved as a repressor of translation of CPE-containing mRNA; a repression that is relieved by phosphorylation or degradation. Involved in the transport of CPE-containing mRNA to dendrites; those mRNAs may be transported to dendrites in a translationally dormant form and translationally activated at synapses. Its interaction with APLP1 promotes local CPE-containing mRNA polyadenylation and translation activation. Induces the assembly of stress granules in the absence of stress.
<b>Abbreviation</b>	Recombinant Human CPEB1 protein
<b>Storage</b>	The shelf life is related to many factors, storage state, buffer ingredients, storage temperature and the stability of the protein itself. Generally, the shelf life of liquid form is 6 months at -20°C/-80°C. The shelf life of lyophilized form is 12 months at -20°C/-80°C.
<b>Uniprot No.</b>	Q9BZB8
<b>Product Type</b>	Recombinant Proteins
<b>Immunogen Species</b>	Homo sapiens (Human)
<b>Purity</b>	≥ 90% as determined by SDS-PAGE.
<b>Sequence</b>	MLFPTSAQESSRGLPDANDLCLGLQSLSLTGWDRPWSTQDSDSSAQSSTHS VLSMLHNPLGNVGLGKPLSFLPLDPLGSDLVDKFPAPSVRGRSLDTRPILDSRS SSPDSDTSGFSSGSDHLSDLISLRISPPLPFLSLSGGGPRDPLKMGVGSRM DQEQAALAAVTPSPTSASKRWPGASVWPSWDLLEAPKDPFSIEREARLHRQA AAVNEATCTWSQLPPRNYKNPIYSCKVFLGGVPWDITEAGLVNTFRVFGSLS VEWPGKDGKHPRCPPKGYVYLVFELEKSVRSLQACSHDPLSPDGLSEYYFK MSSRRMRCKEVQVIPWVLADSNFVRSPSQRLDPSRTVFGALHGMLNAEALA AILNDLFGGVVYAGIDTDKHKYPIGSGRVTFNNQRSYLKAVSAAFVEIKTTKFTK KVQIDPYLEDLCHICSSQPGPFPCRQVCFKYFCRSCWHWRHSMEGLRHH SPLMRNQKNRDSS
<b>Research Area</b>	Epigenetics and Nuclear Signaling
<b>Source</b>	E.coli
<b>Target Names</b>	CPEB1



<b>Expression Region</b>	1-486aa
<b>Notes</b>	Repeated freezing and thawing is not recommended. Store working aliquots at 4°C for up to one week.
<b>Tag Info</b>	N-terminal 6xHis-SUMO-tagged
<b>Mol. Weight</b>	69.6kDa
<b>Protein Length</b>	Full Length of isoform 4

**Image**

(Tris-Glycine gel) Discontinuous SDS-PAGE (reduced) with 5% enrichment gel and 15% separation gel.

**Shelf Life**

The shelf life is related to many factors, storage state, buffer ingredients, storage temperature and the stability of the protein itself. Generally, the shelf life of liquid form is 6 months at -20°C/-80°C. The shelf life of lyophilized form is 12 months at -20°C/-80°C.