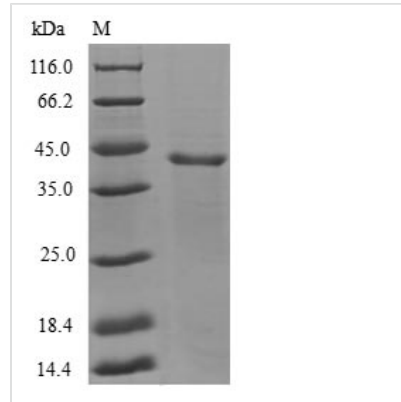




# Recombinant Human Gamma-aminobutyric acid receptor-associated protein-like 1 (GABARAPL1)

<b>Product Code</b>	CSB-EP861986HU
<b>Relevance</b>	Ubiquitin-like modifier that increases cell-surface expression of kappa-type opioid receptor through facilitating anterograde intracellular trafficking of the receptor. Involved in formation of autophagosomal vacuoles. Whereas LC3s are involved in elongation of the phagophore membrane, the GABARAP/GATE-16 subfamily is essential for a later stage in autophagosome maturation.
<b>Abbreviation</b>	Recombinant Human GABARAPL1 protein
<b>Storage</b>	The shelf life is related to many factors, storage state, buffer ingredients, storage temperature and the stability of the protein itself. Generally, the shelf life of liquid form is 6 months at -20°C/-80°C. The shelf life of lyophilized form is 12 months at -20°C/-80°C.
<b>Uniprot No.</b>	Q9H0R8
<b>Alias</b>	Early estrogen-regulated protein GABA(A) receptor-associated protein-like 1 Glandular epithelial cell protein 1
<b>Product Type</b>	Recombinant Protein
<b>Immunogen Species</b>	Homo sapiens (Human)
<b>Purity</b>	Greater than 90% as determined by SDS-PAGE.
<b>Sequence</b>	MKFQYKEDHDPFEYRKKEGEGEKIRKKYPDRVPVIVEKAPKARVPDLDKRKYLVP SLTVGQFYFLIRKRIHLRPEDALFFVNNTIPPTSATMGQLYEDNHEEDYFLYVA YSDESVYG
<b>Research Area</b>	Neuroscience
<b>Source</b>	E.coli
<b>Target Names</b>	GABARAPL1
<b>Protein Names</b>	Recommended name: Gamma-aminobutyric acid receptor-associated protein-like 1 Alternative name(s): Early estrogen-regulated protein GABA(A) receptor-associated protein-like 1 Glandular epithelial cell protein 1 Short name= GEC-1
<b>Expression Region</b>	1-117aa
<b>Notes</b>	Repeated freezing and thawing is not recommended. Store working aliquots at 4°C for up to one week.
<b>Tag Info</b>	N-terminal GST-tagged
<b>Mol. Weight</b>	40.9kDa
<b>Protein Length</b>	Full Length
<b>Image</b>	



(Tris-Glycine gel) Discontinuous SDS-PAGE (reduced) with 5% enrichment gel and 15% separation gel.

### Reconstitution

We recommend that this vial be briefly centrifuged prior to opening to bring the contents to the bottom. Please reconstitute protein in deionized sterile water to a concentration of 0.1-1.0 mg/mL. We recommend to add 5-50% of glycerol (final concentration) and aliquot for long-term storage at -20°C/-80°C. Our default final concentration of glycerol is 50%. Customers could use it as reference.

### Shelf Life

The shelf life is related to many factors, storage state, buffer ingredients, storage temperature and the stability of the protein itself. Generally, the shelf life of liquid form is 6 months at -20°C/-80°C. The shelf life of lyophilized form is 12 months at -20°C/-80°C.