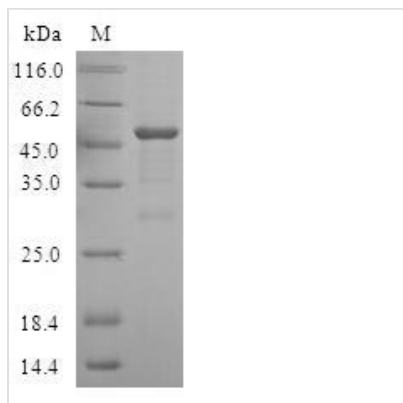




Recombinant Human Ubiquitin-like-conjugating enzyme ATG10 (ATG10)

Product Code	CSB-EP861988HU
Relevance	E2-like enzyme involved in autophagy. Acts as an E2-like enzyme that catalyzes the conjugation of ATG12 to ATG5. ATG12 conjugation to ATG5 is required for autophagy. Likely serves as an ATG5-recognition molecule. Not involved in ATG12 conjugation to ATG3. Plays a role in adenovirus-mediated cell lysis.
Abbreviation	Recombinant Human ATG10 protein
Storage	The shelf life is related to many factors, storage state, buffer ingredients, storage temperature and the stability of the protein itself. Generally, the shelf life of liquid form is 6 months at -20°C/-80°C. The shelf life of lyophilized form is 12 months at -20°C/-80°C.
Uniprot No.	Q9H0Y0
Alias	Autophagy-related protein 10
Product Type	Recombinant Protein
Immunogen Species	Homo sapiens (Human)
Purity	≥ 90% as determined by SDS-PAGE.
Sequence	MEDEFIDGEKTFQRYCAEFIKHSQQIGDSWEWRPSKDCSDGYMCKIHFQIKNG SVMSHLGASTHGQTCLPMEEAFELPLDDCEVIETAAASEVIKYEYHVLVYSCSY QVPVLYFRASFLDGRPLTLKDIWEGVHECYKMRLQGPWDTITQQEHPILGQP FFVLHPCKTNEFMTPVLKNSQKINKNVNYITSWLSIVGPVVGLNLPLSYAKATS QDERNVP
Research Area	Cell Biology
Source	E.coli
Target Names	ATG10
Protein Names	Recommended name: Ubiquitin-like-conjugating enzyme ATG10 EC= 6.3.2.- Alternative name(s): Autophagy-related protein 10 Short name= APG10-like
Expression Region	1-220aa
Notes	Repeated freezing and thawing is not recommended. Store working aliquots at 4°C for up to one week.
Tag Info	N-terminal GST-tagged
Mol. Weight	52.3kDa
Protein Length	Full Length
Image	



(Tris-Glycine gel) Discontinuous SDS-PAGE (reduced) with 5% enrichment gel and 15% separation gel.

Reconstitution

We recommend that this vial be briefly centrifuged prior to opening to bring the contents to the bottom. Please reconstitute protein in deionized sterile water to a concentration of 0.1-1.0 mg/mL. We recommend to add 5-50% of glycerol (final concentration) and aliquot for long-term storage at -20°C/-80°C. Our default final concentration of glycerol is 50%. Customers could use it as reference.

Shelf Life

The shelf life is related to many factors, storage state, buffer ingredients, storage temperature and the stability of the protein itself. Generally, the shelf life of liquid form is 6 months at -20°C/-80°C. The shelf life of lyophilized form is 12 months at -20°C/-80°C.