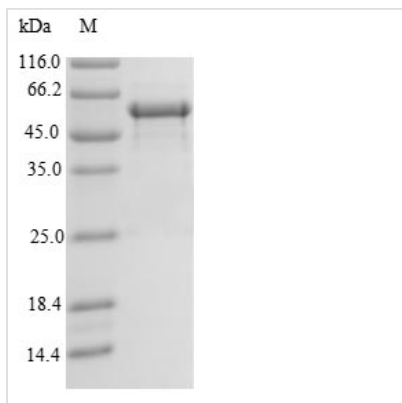




Recombinant Human Translation initiation factor IF-3, mitochondrial (MTIF3)

Product Code	CSB-EP862000HU
Relevance	IF-3 binds to the 28S ribosomal subunit and shifts the equilibrium between 55S ribosomes and their 39S and 28S subunits in favor of the free subunits, thus enhancing the availability of 28S subunits on which protein synthesis initiation begins.
Abbreviation	MTIF3
Storage	The shelf life is related to many factors, storage state, buffer ingredients, storage temperature and the stability of the protein itself. Generally, the shelf life of liquid form is 6 months at -20°C/-80°C. The shelf life of lyophilized form is 12 months at -20°C/-80°C.
Uniprot No.	Q9H2K0
Product Type	Recombinant Protein
Immunogen Species	Homo sapiens (Human)
Purity	≥ 90% as determined by SDS-PAGE.
Sequence	TAPAQLSPIASAPRLSFLIHAKAFSTAEDTQNEGKTKKNKTAFSNVGRKISQR VIHLFDEKGNLDLGNMHRANVIRLMDERDLRLVQRNTSTEPAEYQLMTGLQILQ ERQRLREMEKANPKTGPTLRKELILSSNIGQHDLDTKTKQIQQWIKKKHLVQITI KKGKNVDVSENEEMEEIFHQILQTMPGIATFSSRPQAVQGGKALMCVLRAFSKN EEKAYKETQETQERDTLNKDHGNDKESNVLHQ
Research Area	Neuroscience
Source	E.coli
Target Names	MTIF3
Protein Names	Recommended name: Translation initiation factor IF-3, mitochondrial Short name= IF-3(Mt) Short name= IF-3Mt Short name= IF3(mt) Short name= IF3mt
Expression Region	1-278aa
Notes	Repeated freezing and thawing is not recommended. Store working aliquots at 4°C for up to one week.
Tag Info	N-terminal GST-tagged
Mol. Weight	55.2kDa
Protein Length	Full Length
Image	



(Tris-Glycine gel) Discontinuous SDS-PAGE (reduced) with 5% enrichment gel and 15% separation gel.

Reconstitution

We recommend that this vial be briefly centrifuged prior to opening to bring the contents to the bottom. Please reconstitute protein in deionized sterile water to a concentration of 0.1-1.0 mg/mL. We recommend to add 5-50% of glycerol (final concentration) and aliquot for long-term storage at $-20^{\circ}\text{C}/-80^{\circ}\text{C}$. Our default final concentration of glycerol is 50%. Customers could use it as reference.

Shelf Life

The shelf life is related to many factors, storage state, buffer ingredients, storage temperature and the stability of the protein itself. Generally, the shelf life of liquid form is 6 months at $-20^{\circ}\text{C}/-80^{\circ}\text{C}$. The shelf life of lyophilized form is 12 months at $-20^{\circ}\text{C}/-80^{\circ}\text{C}$.