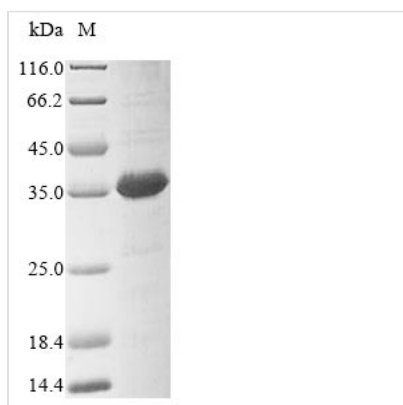




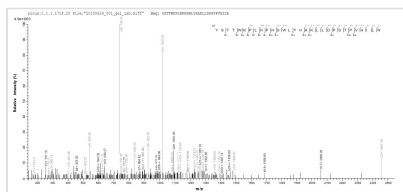
Recombinant Human DDB1- and CUL4-associated factor 16 (DCAF16)

Product Code	CSB-EP865168HU
Abbreviation	Recombinant Human DCAF16 protein
Storage	The shelf life is related to many factors, storage state, buffer ingredients, storage temperature and the stability of the protein itself. Generally, the shelf life of liquid form is 6 months at -20°C/-80°C. The shelf life of lyophilized form is 12 months at -20°C/-80°C.
Uniprot No.	Q9NXF7
Product Type	Recombinant Protein
Immunogen Species	Homo sapiens (Human)
Purity	Greater than 85% as determined by SDS-PAGE.
Sequence	MGPRNPSPDHLSESESEEEEEENISYLNESGEEWDSSEEDSMVPNLSPLESL AWQVKCLLKYSTTWKPLNPNSWLYHAKLLDPSTPVHILREIGLRLSHCVCV KLEPIPEWPLASCGVPPFQKPLTSPSRLSRDHATLNGALQFATKQLSRTL ATPIPEYLKQIPNSCVSGCCCGWLTKTVKETTRTEPINTTYSYTDQKAVNKLL TASL
Research Area	Others
Source	E.coli
Target Names	DCAF16
Protein Names	Recommended name: DDB1- and CUL4-associated factor 16
Expression Region	1-216aa
Notes	Repeated freezing and thawing is not recommended. Store working aliquots at 4°C for up to one week.
Tag Info	N-terminal 10xHis-tagged and C-terminal Myc-tagged
Mol. Weight	31.2 kDa
Protein Length	Full Length

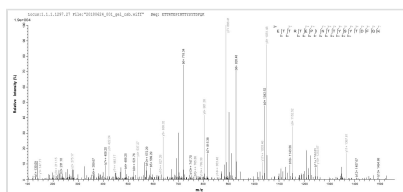
Image



(Tris-Glycine gel) Discontinuous SDS-PAGE (reduced) with 5% enrichment gel and 15% separation gel.



Based on the SEQUEST from database of E.coli host and target protein, the LC-MS/MS Analysis result of CSB-EP865168HU could indicate that this peptide derived from E.coli-expressed Homo sapiens (Human) DCAF16.



Based on the SEQUEST from database of E.coli host and target protein, the LC-MS/MS Analysis result of CSB-EP865168HU could indicate that this peptide derived from E.coli-expressed Homo sapiens (Human) DCAF16.

Reconstitution

We recommend that this vial be briefly centrifuged prior to opening to bring the contents to the bottom. Please reconstitute protein in deionized sterile water to a concentration of 0.1-1.0 mg/mL. We recommend to add 5-50% of glycerol (final concentration) and aliquot for long-term storage at -20°C/-80°C. Our default final concentration of glycerol is 50%. Customers could use it as reference.

Shelf Life

The shelf life is related to many factors, storage state, buffer ingredients, storage temperature and the stability of the protein itself. Generally, the shelf life of liquid form is 6 months at -20°C/-80°C. The shelf life of lyophilized form is 12 months at -20°C/-80°C.