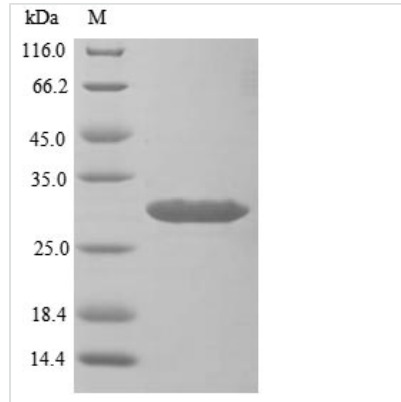




Recombinant Mouse Sclerostin domain-containing protein 1 (Sostdc1)

Product Code	CSB-EP866588MO
Relevance	May be involved in the onset of endometrial receptivity for implantation/sensitization for the decidual cell reaction. Enhances Wnt signaling and inhibits TGF-beta signaling. Directly antagonizes activity of BMP2, BMP4, BMP6 and BMP7 in a dose-dependent manner.
Abbreviation	Recombinant Mouse Sostdc1 protein
Storage	The shelf life is related to many factors, storage state, buffer ingredients, storage temperature and the stability of the protein itself. Generally, the shelf life of liquid form is 6 months at -20°C/-80°C. The shelf life of lyophilized form is 12 months at -20°C/-80°C.
Uniprot No.	Q9CQN4
Product Type	Recombinant Protein
Immunogen Species	Mus musculus (Mouse)
Purity	Greater than 85% as determined by SDS-PAGE.
Sequence	FKNDATEILYSHVVKPVPAHPSSNSTLNQARNGGRHFSSTGLDRNSRVQVGC RELIRSTKYISDGQCTSISPLKELVCAGECLPLPVLPNWIGGGYGTKYWSRRSS QEWRCVNDKTRTQRIQLQCQDGSTRTYKITVVTACKCKRYTRQHNESSHNF SVSPAKPAQHHRERKRASKSSKHLSL
Research Area	Signal Transduction
Source	E.coli
Target Names	Sostdc1
Protein Names	Ectodermal BMP inhibitor Short name: Ectodin Sclerostin-like protein Uterine sensitization-associated gene 1 protein Short name: USAG-1 Sostl, Usag1
Expression Region	24-206aa
Notes	Repeated freezing and thawing is not recommended. Store working aliquots at 4°C for up to one week.
Tag Info	N-terminal 10xHis-tagged and C-terminal Myc-tagged
Mol. Weight	27.6 kDa
Protein Length	Full Length of Mature Protein
Image	



(Tris-Glycine gel) Discontinuous SDS-PAGE (reduced) with 5% enrichment gel and 15% separation gel.

Reconstitution

We recommend that this vial be briefly centrifuged prior to opening to bring the contents to the bottom. Please reconstitute protein in deionized sterile water to a concentration of 0.1-1.0 mg/mL. We recommend to add 5-50% of glycerol (final concentration) and aliquot for long-term storage at -20°C/-80°C. Our default final concentration of glycerol is 50%. Customers could use it as reference.

Shelf Life

The shelf life is related to many factors, storage state, buffer ingredients, storage temperature and the stability of the protein itself. Generally, the shelf life of liquid form is 6 months at -20°C/-80°C. The shelf life of lyophilized form is 12 months at -20°C/-80°C.