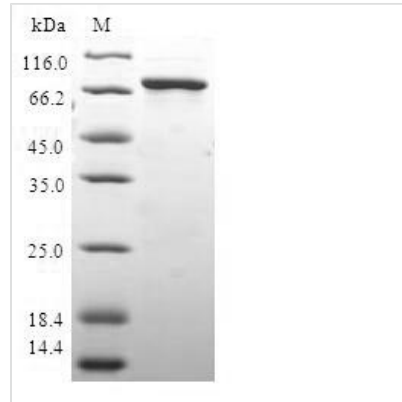




Recombinant Human HAUS augmin-like complex subunit 4 (HAUS4)

Product Code	CSB-EP867157HU
Relevance	Contributes to mitotic spindle assembly, maintenance of centrosome integrity and completion of cytokinesis as part of the HAUS augmin-like complex.
Abbreviation	Recombinant Human HAUS4 protein
Storage	The shelf life is related to many factors, storage state, buffer ingredients, storage temperature and the stability of the protein itself. Generally, the shelf life of liquid form is 6 months at -20°C/-80°C. The shelf life of lyophilized form is 12 months at -20°C/-80°C.
Uniprot No.	Q9H6D7
Product Type	Recombinant Protein
Immunogen Species	Homo sapiens (Human)
Purity	≥ 90% as determined by SDS-PAGE.
Sequence	MASGDFCSPGEGMEILQQVCSKQLPPCNLSKEDLLQNPYFSKLLLNLNSQHVD ESGLSLTLAKEQAQAWKEVRLHKTTWLRSEILHRVIQELLVDYYVKIQDTNVTS EDKKFHETLEQRLLVTELMRLLGPSQEREIPPLGLEKADLLELMPLSEDFVWM RARLQQEVEEQKKKCFTLLCYDPNSDADSETVKAQVWKLAEVLVGEQQQ CQDAKSQQKEQMLLLEKKSAAYSQVLLRCLTLLQRLLQEHLRKTQSELDRINA QYLEVKCGAMILKLRMEELKILSDTYTVEKVEVHRLIRDRLEGAIHLQEQDMEN SRQVLNSYEVLGEEFDRLVKEYTVLKQATENKRWALQEFKVVYR
Research Area	others
Source	E.coli
Target Names	HAUS4
Protein Names	Recommended name: HAUS augmin-like complex subunit 4
Expression Region	1-363aa
Notes	Repeated freezing and thawing is not recommended. Store working aliquots at 4°C for up to one week.
Tag Info	N-terminal GST-tagged
Mol. Weight	69.4kDa
Protein Length	Full Length
Image	



(Tris-Glycine gel) Discontinuous SDS-PAGE (reduced) with 5% enrichment gel and 15% separation gel.

Reconstitution

We recommend that this vial be briefly centrifuged prior to opening to bring the contents to the bottom. Please reconstitute protein in deionized sterile water to a concentration of 0.1-1.0 mg/mL. We recommend to add 5-50% of glycerol (final concentration) and aliquot for long-term storage at -20°C/-80°C. Our default final concentration of glycerol is 50%. Customers could use it as reference.

Shelf Life

The shelf life is related to many factors, storage state, buffer ingredients, storage temperature and the stability of the protein itself. Generally, the shelf life of liquid form is 6 months at -20°C/-80°C. The shelf life of lyophilized form is 12 months at -20°C/-80°C.